



The Social Planning Council of Peel

PORTRAITS OF PEEL, 2006



March 2009

SPONSORED BY

The United Way of Peel Region and The Ontario Trillium Foundation



THE ONTARIO
TRILLIUM
FOUNDATION



LA FONDATION
TRILLIUM
DE L'ONTARIO



The Social Planning Council of Peel

PORTRAITS OF PEEL, 2006

March 2009

Prepared by:

Srimanta Mohanty, Ph.D. & Paula DeCoito, Ph.D.

TABLE OF CONTENTS

Acknowledgments.....	ii
Executive Summary	iii-vi
Introduction.....	1
I. Demographic and Cultural Characteristics	2-28
A. Population Growth	3
B. Age Group	7
C. Immigrant Population.....	13
D. Visible Minority Groups	19
E. Mother Tongue Language	24
II. Household and Family Characteristics	29-48
A. Marital Status	30
B. Families	33
C. People Living Alone.....	39
D. Home Ownership	44
III. Socio-economic Characteristics	49-66
A. Education	50
B. Employment	54
C. Income and Poverty.....	59-66
IV. Conclusion & Implications	67-70
Bibliography	71
Appendices	72-77
A. Approach to Selection of Neighbourhoods & Geographic Areas Covered	73
B. Selection of Social Indicators.....	74
C. Glossary.....	75-77

ACKNOWLEDGMENTS

The Social Planning Council of Peel wishes to acknowledge the funding support of the United Way of Peel Region and the Ontario Trillium Foundation for the publication of this report. The SPC also acknowledges the support it received from the Social Planning Network of Ontario and Community Development Halton. The Social Planning Council of Peel would like to thank Debbie Alves, Andre Lyn and Nia Simon for their research support to the project.

EXECUTIVE SUMMARY

This report provides a comparative analysis of the demographic and socio-economic characteristics of the Region of Peel at the municipal and neighbourhood levels. In addition, *Portraits of Peel* compares Peel to Ontario and Canada as a whole. Fifteen (15) neighbourhoods were selected for analysis. The 2006 *Portraits of Peel* is based on the 2001 neighbourhood boundaries. The source of the data in this report is the 2001 and 2006 Census.

The report shows where the socio-economic strengths and challenges are in the Region – at the neighbourhood level. A significant finding of this research is that there are several neighbourhoods within the Region of Peel with a high proportion of their population at risk of poverty, loneliness, social isolation, etc. Examples of such neighbourhoods include:

- Malton;
- Port Credit/Lakeview;
- Cooksville/Dixie;
- Central Brampton; and
- Creditview.

With the exception of Port Credit/Lakeview, all of the above neighbourhoods have a relatively high percentage of lone-parent families, people living on low incomes, immigrants, and visible minorities.

Port Credit/Lakeview is quite different from the above listed neighbourhoods. It has one of the lowest percentages of immigrants and visible minorities in Peel. However, it has the highest proportion of seniors, seniors living alone, widowed persons, and divorced/separated persons in all of Peel. The main value of the comparative analysis in this report is that it can be used to inform decision-making about priorities for social services, community development, and neighbourhoods in Peel Region.

Four themes emerged from the analysis of the data on the Peel population: growth, diversity, vulnerability, and resilience and civic capital.

THEMES OR TRENDS IN THE PEEL POPULATION (2006)

Theme/Trend	Social Indicators	Implications for Human Services Sector
Growth	<ul style="list-style-type: none"> ▪ With a population of 1.2 million, Peel was one of the fastest growing regions in Canada, in 2006. ▪ Brampton was the fastest growing municipality in Peel between 2001 and 2006 (33.3%), followed by Caledon (12.7%) and Mississauga (9.1%). ▪ The three neighbourhoods with highest growth rate between 2001 and 2006 were: Gore (1,396.2%), Caledon (Urban) (454.9%) and Heartlake (115.9%). 	<ul style="list-style-type: none"> ▪ Increased demand for social services as well as for health, housing, employment, language training and other services for the population of Peel. ▪ Increased demand for public transportation services.
Diversity	<ul style="list-style-type: none"> ▪ In 2006, 48.6% of Peel's population were immigrants. ▪ Peel's immigrant population grew by 32.1% between 2001 and 2006, compared to 13.6% for Canada and 12.25 for Ontario. ▪ In 2006, 50% of Peel's population identified themselves as a member of a visible minority group. ▪ The three largest groups of visible minorities in Peel in 2006 were: South Asians (272,765), Blacks (95,570), and Chinese (54,290). ▪ In 2006, 44.3% of Peel's population did not speak English or French as their first language. ▪ Excluding English, the top three languages spoken in Peel in 2006 were: Punjabi (8%), Urdu (3.7%) and Chinese (3.6%). 	<ul style="list-style-type: none"> ▪ Increased demand for culturally appropriate services for the Peel population. ▪ Increased demand for settlement services for Peel immigrants. ▪ Increased demand for diversity management training for health and social service organizations. ▪ Increased demand for social policies that address issues of diversity and social inclusion.

THEMES OR TRENDS IN THE PEEL POPULATION - 2006 (Cont'd.)

<p>Vulnerability</p>	<ul style="list-style-type: none"> ▪ Peel has a large percentage of people living on low incomes: (14.5%); isolated seniors (15.7%, 15,520); lone-parent families (15.3%, 49,600). ▪ The number of lone-parent families in Peel grew by 24.2% between 2001 and 2006. ▪ Over the same period, lone-parent families grew the fastest in Brampton (39.6%). ▪ In 2006, Malton had the highest proportion of lone-parent families (19.8%). ▪ An increasing number of individuals and seniors are living alone in Peel, growing by 19.8% and 23.1% respectively, between 2001 and 2006. 	<ul style="list-style-type: none"> ▪ Increased demand for income support and employment training for the Peel population. ▪ Increased demand for family support services in Peel communities. ▪ Increased demand for affordable housing, affordable recreation services, dental services, etc. for the Peel population.
<p>Resilience and Civic Capital</p>	<ul style="list-style-type: none"> ▪ 23% of the Peel population had a university degree compared to 21% in Ontario, and 18% in Canada as a whole. ▪ In 2006, 78.1% of Peel's population were home owners, compared to 71% in Ontario and 68.4% in Canada. ▪ The rate of growth in home ownership in Peel between 2001 and 2006 (22.1%) was significantly better than the growth rate for Ontario (13%) and Canada (11.8%). ▪ In 2005, the average family income in Peel of \$94,302 was higher than the \$90,526 in Ontario and \$82,325 for Canada as a whole. 	<ul style="list-style-type: none"> ▪ Increased demand (need) for participation in the Peel community at large, including opportunities for volunteerism and other forms of civic engagement and leadership

PEEL 2006 (Overview)

Population

Male:	570,395	49.2%
Female:	589,005	50.8%
Total Population:	1,159,400	
Population Growth 2001 to 2006:	17.2%	

Age Groups

0 - 4 years:	75,585	6.5%
5 - 9 years:	81,255	7.0%
10 - 14 years:	88,150	7.6%
15 - 24 years:	163,165	14.1%
25 - 44 years:	360,285	31.1%
45 - 64 years:	286,420	24.7%
65+ years:	104,520	9.0%

Immigrants

Total Immigrant Population:	561,235	48.6%*
By Place of Birth (Top 3)		
1. Southern Asia	168,750	30.1%
2. Southern Europe	63,380	11.3%
3. Southeast Asia	53,130	9.5%

Visible Minorities

Total Visible Minorities:	576,665	50.0%*
By Visible Minority Group (Top 3)		
1. South Asian	272,760	23.6%
2. Black	95,565	8.3%
3. Chinese	54,285	4.7%

Language (Mother Tongue)

Total Population		
By Mother Tongue:	1,154,070	100.0%
Multiple Responses:	27,895	2.4%
Single Responses:	1,126,165	97.6%
English:	603,445	52.3%
French:	11,975	1.0%
Non-Official Languages	510,760	44.3%
Punjabi	92,820	8.0%
Urdu	42,975	3.7%
Chinese	41,850	3.6%
Polish	34,830	3.0%
Portuguese	31,790	2.8%
Other languages	266,495	23.1%

Marital Status

Single:	276,530	30.2%
Married:	520,350	56.9%
Widowed:	40,995	4.5%
Divorced or Separated:	76,535	8.4%

Families

Couple Families:	274,510	84.7%
Lone-Parent Families:	49,600	15.3%

Population Living Alone

Individuals Living Alone:	52,555	4.6%
Seniors Living Alone:	15,520	15.7%

Home Ownership

Owned Dwellings:	280,465	78.1%
Rented Dwellings:	78,600	21.8%

Type of Housing

Single Detached:	168,780	47.0%
Apartments 5+ Storeys:	66,030	18.4%
Other:	124,230	34.6%

Education

Total Population 15 years+	909,145	100.0%
No Certificate or Diploma	180,865	19.9%
High School Certificate	247,840	27.3%
Trades with Cert/Diploma	63,610	7.0%
Community College	155,785	17.1%
University:		
Without degree	53,565	5.9%
Bachelor's degree or higher	207,470	22.8%

Employment (Population 15 years+)

Participation Rate:	71.6% (651,200)
Unemployment Rate:	6.4% (41,930)

Income & Poverty in 2005

Average Family Income	\$94,302
Median Family Income	\$79,045
% in low income before tax - All Persons	14.5%
% in low income after tax - All Persons	11.0%

Source: Statistics Canada, Census of Canada, 2006.

Note: Totals may not exactly equal the sum of their components due to rounding.

INTRODUCTION

Background

Peel is one of the fastest growing regions in Canada, with over one million people. Located west of the City of Toronto, Peel is comprised of the cities of Mississauga and Brampton, and the Town of Caledon. *Portraits of Peel* is a report on the population of the Peel Region. It provides official statistics on different social and economic aspects of the population of Peel at the regional level, the city level and the neighbourhood level. The source of the data in **Portraits of Peel** is Statistics Canada: Census of Canada (2001 & 2006). Please note that the 2006 Portraits of Peel is based on the 2001 neighbourhood boundaries (*Each neighbourhood/forward sortation area (FSA) is described separately and in detail on the Social Planning Council of Peel's website*).

Purpose

This report provides a comparative analysis of the demographic and socio-economic characteristics of the different neighbourhoods (15) in Peel Region. The main value of the comparative analysis provided in this report is that it can be used to inform decision-making about priorities for social services and community development in Peel Region. The report shows where the socio-economic strengths and challenges are in the Region – at the neighbourhood level.

Target Audiences

The main audiences for whom this report has been written are:

- the non-profit, social services sector of Peel
- inter-agency collaboratives (of social service agencies)
- citizen-based community groups
- funders of non-profit social service agencies and community groups
- public policy makers in Peel, especially those responsible for the social infrastructure of Peel Region.

Although the major audience for this report is the social services sector, professionals and leaders in other sectors may find the information useful for their own planning purposes.

I. Demographic and Cultural Characteristics

A. HIGHLIGHTS: POPULATION GROWTH 2001-2006

- Peel is one of the fastest growing regions in Canada, with over one million people (1,159,405).
- People in Peel make up 9.5% of the Ontario population and 3.7% of the total Canadian population.
- Slightly more than half (589,010 or 50.8%) of Peel's population of 1,159,405 in 2006 was comprised of females; the remaining 570,400 or 49.2% of Peel's population, was comprised of males.
- Peel's population grew at a faster rate than that of Ontario and Canada. Between 2001 and 2006, Peel's population grew by 17.2% compared to 6.6% in Ontario, and 5.4% in Canada.
- Of Peel's three municipalities, Brampton had the highest population growth rate between 2001 and 2006, (33.3%) followed by Caledon at a rate of 12.7% and by Mississauga with 9.1%.
- The neighbourhoods with the largest population growth rates between 2001 and 2006 were: Gore (1,396.2%), Caledon (Urban) (454.9%), and Heartlake (115.9%).
- Between 2001 and 2006, the neighbourhoods in Peel with the smallest population growth rates were: Cooksville/Dixie (1.9%), Hurontario (7.7%), and Central Brampton (9.9%).
- Between 2001 and 2006, neighbourhoods that experienced a negative growth rate in their population were: Clarkson/Lorne Park (-0.9%); Port Credit/Lakeview (-1.4%), Erin Mills/Erindale (-3.4%) and Malton (-7.3%).

Table 1. Population Size and Growth: Canada, Ontario, Peel, Mississauga, Brampton and Caledon, 2006

REGION	TOTAL 2006		MALE POPULATION 2006		FEMALE POPULATION 2006		POPULATION GROWTH 2001-2006
	#	%	#	%	#	%	%
Canada	31,612,897	100.0	15,475,970	49.0	16,136,930	51.0	5.4
Ontario	12,160,282	100.0	5,930,700	48.8	6,229,580	51.2	6.6
Peel	1,159,405	100.0	570,400	49.2	589,010	50.8	17.2
City of Mississauga	668,549	100.0	327,530	49.0	341,015	51.0	9.1
City of Brampton	433,806	100.0	214,430	49.4	219,375	50.6	33.3
Town of Caledon	57,050	100.0	28,435	49.8	28,615	50.2	12.7

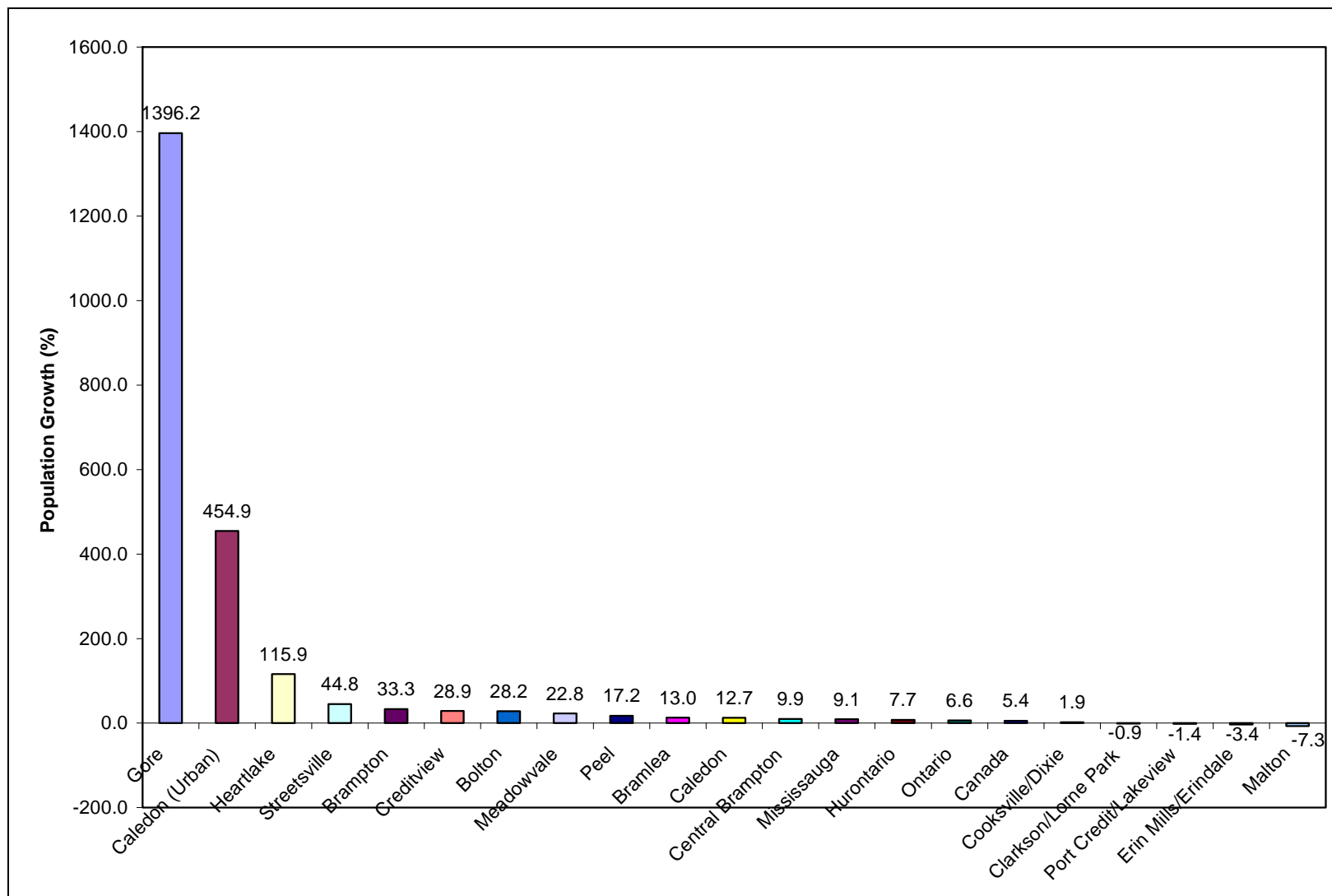
Source: Statistics Canada, Census of Canada, 2001; 2006.

Table 2. Rate of Change in Population Size and Growth: Canada, Ontario, Peel, Peel's Municipalities and Selected Peel Neighbourhoods, 2001 & 2006

Region & Neighbourhoods	Total Population 2001		Total Population 2006		Population Growth 2001-2006	
	#	%	#	%	#	%
Canada	30,007,090	100.0	31,612,870	100.0	1,605,780	5.4
Ontario	11,410,030	100.0	12,160,280	100.0	750,250	6.6
Peel	988,950	100.0	1,159,400	100.0	170,450	17.2
City of Mississauga	612,925	100.0	668,545	100.0	55,620	9.1
Clarkson/Lorne Park	46,375	100.0	45,965	100.0	-410	-0.9
Cooksville/Dixie	158,510	100.0	161,560	100.0	3,050	1.9
Creditview	37,135	100.0	47,855	100.0	10,720	28.9
Erin Mills/Erindale	94,955	100.0	91,755	100.0	-3,200	-3.4
Hurontario	62,460	100.0	67,255	100.0	4,795	7.7
Malton	41,165	100.0	38,175	100.0	-2,990	-7.3
Meadowvale	84,225	100.0	103,425	100.0	19,200	22.8
Port Credit/ Lakeview	32,465	100.0	32,005	100.0	-460	-1.4
Streetsville	55,600	100.0	80,525	100.0	24,925	44.8
City of Brampton	325,430	100.0	433,805	100.0	108,375	33.3
Bramalea	129,020	100.0	145,790	100.0	16,770	13.0
Central Brampton	154,755	100.0	170,110	100.0	15,355	9.9
Gore	2,250	100.0	33,665	100.0	31,415	1,396.2
Heartlake	38,990	100.0	84,160	100.0	45,170	115.9
Town of Caledon	50,595	100.0	57,050	100.0	6,455	12.8
Bolton	25,800	100.0	33,075	100.0	7,275	28.2
Caledon (Urban)	2,715	100.0	15,065	100.0	12,350	454.9

Source: Statistics Canada, Census of Canada, 2001; 2006.

Figure 1 Population Growth: Canada, Ontario, Peel, Peel’s Municipalities and Selected Peel Neighbourhoods, 2001-2006



Source: Statistics Canada, Census of Canada, 2001; 2006.

B. HIGHLIGHTS: AGE GROUPS IN PEEL, 2006

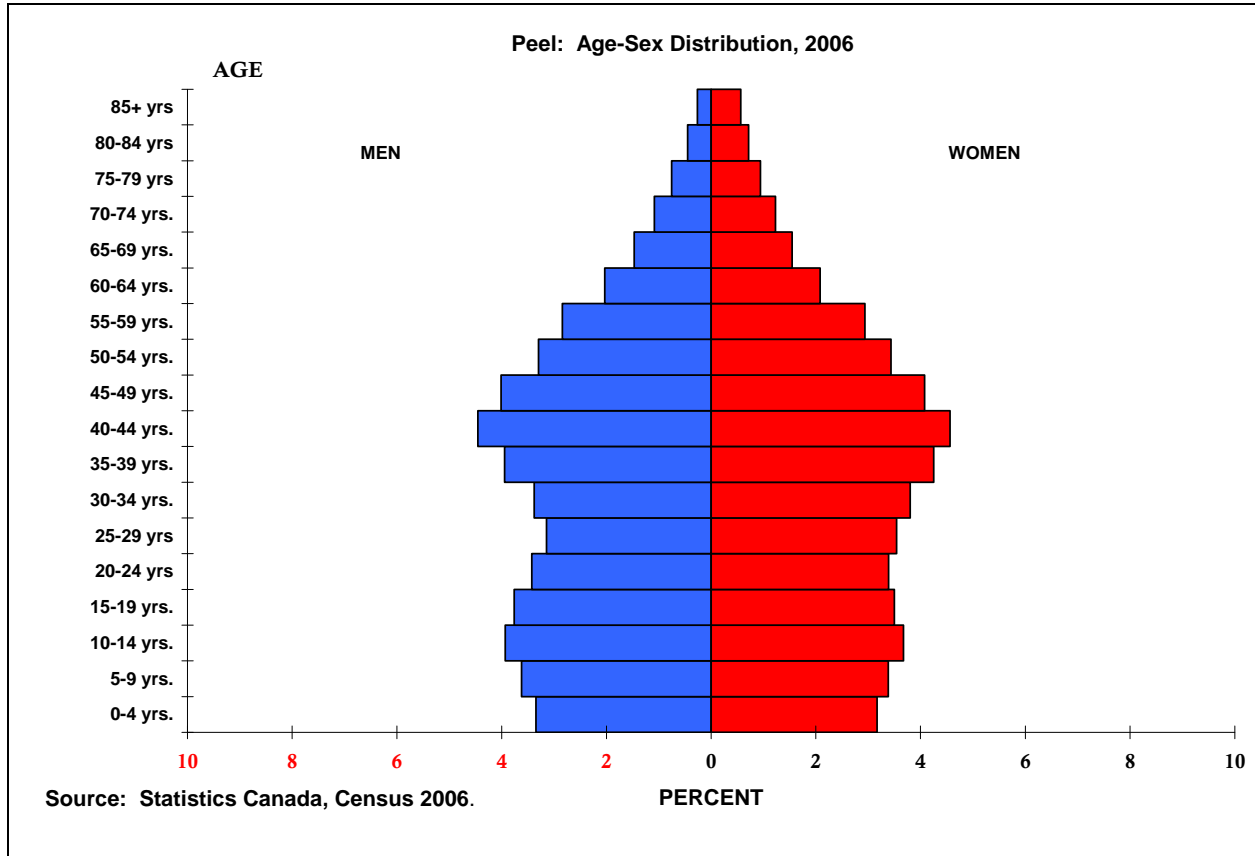
- 21.1% of Peel's population in 2006 were in the 0 to 14 age group. The comparative figure for Ontario was 18.1% and for Canada, 17.6%.
- The largest single age group in Peel in 2006 was the 25-44 age group. This group comprised 31.1% of Peel's total population. The comparative figure for Ontario was 28.4% and for Canada, 27.9%.
- 9% of Peel's population in 2006 were aged 65 and older. The comparative figure for Ontario was 13.6%, and for Canada, 13.7%.
- Of Peel's three municipalities, Brampton had the highest proportion of people aged 0-14: 22.8%, followed by Caledon with 21.9%, and Mississauga with 19.9% in 2006.
- Of the three municipalities in Peel, Mississauga had the highest proportion of people aged 65 and older: 9.8%, compared to Caledon with 9.0% and Brampton with 7.8%.
- In 2006, the four (4) neighbourhoods with the highest proportion of seniors (65+) also had the lowest proportion of young children (0-14 year olds): Port Credit/Lakeview (14.7% and 4.9% respectively); Cooksville/Dixie (13% and 5.7% respectively); Clarkson/Lorne Park (13% and 4.8% respectively) and Caledon (Urban) (11.2% and 4.1% respectively).
- The 65+ age group recorded a growth rate of 32.6%, the highest in Peel between 2001 and 2006. This was followed by the 45-64 age range, with a growth rate of 27.3%, and next by the 15-24 age range at a rate of 18.2% over the same period.
- Brampton recorded the highest growth rate in the 65 and older population of 48.5% between 2001 and 2006, followed by Caledon with a growth rate of 29%, while for Mississauga the growth rate of their 65 and older population was only 8.5%.

**Table 3. Population by Age Group: Canada, Ontario, Peel,
Peel's Municipalities and Selected Peel Neighbourhoods, 2006**

Region & Neighbourhoods	0-4		5-9		10-14		15-24		25-44		45-64		65+ Years	
	#	%	#	%	#	%	#	%	#	%	#	%	#	%
Canada	1,690,540	5.3	1,809,365	5.7	2,079,935	6.6	4,220,875	13.4	8,824,480	27.9	8,652,390	27.4	4,335,220	13.7
Ontario	670,765	5.5	721,590	5.9	818,445	6.7	1,630,365	13.4	3,452,035	28.4	3,217,885	26.5	1,649,170	13.6
Peel	75,585	6.5	81,255	7.0	88,150	7.6	163,165	14.1	360,285	31.1	286,420	24.7	104,520	9.0
City of Mississauga	39,720	5.9	43,835	6.6	49,620	7.4	95,380	14.3	202,380	30.3	171,905	25.7	65,690	9.8
Clarkson/Lorne Park	2,210	4.8	2,840	6.2	3,370	7.3	6,355	13.8	11,980	26.1	13,250	28.8	5,960	13.0
Cooksville/Dixie	9,170	5.7	8,975	5.6	9,670	6.0	21,350	13.2	50,330	31.2	41,030	25.4	20,975	13.0
Creditview	3,095	6.5	3,885	8.1	4,435	9.3	7,385	15.4	14,930	31.2	11,045	23.1	3,070	6.4
Erin Mills/Erindale	4,550	5.0	5,550	6.0	7,065	7.7	14,790	6.1	23,620	25.7	26,585	29.0	9,585	10.4
Hurontario	3,660	5.4	4,235	6.3	4,850	7.2	10,200	15.2	21,135	31.4	17,610	26.2	5,555	8.3
Malton	2,875	7.5	2,850	7.5	2,670	7.0	5,210	13.6	12,020	31.5	8,585	22.5	3,935	10.3
Meadowvale	7,490	7.2	8,185	7.9	8,870	8.6	14,315	13.8	34,215	33.1	24,550	23.7	5,800	5.6
Port Credit/ Lakeview	1,555	4.9	1,510	4.7	1,815	5.7	3,815	11.9	9,225	28.8	9,355	29.2	4,700	14.7
Streetsville	5,095	6.3	5,805	7.2	6,860	8.5	11,915	14.8	24,895	30.9	19,900	24.7	6,060	7.5
City of Brampton	32,200	7.4	33,135	7.6	33,970	7.8	60,370	13.9	141,270	32.6	99,170	22.9	33,675	7.8
Bramalea	10,180	7.0	11,140	7.6	11,555	7.9	20,470	14.0	46,025	31.6	34,415	23.6	12,005	8.2
Central Brampton	12,030	7.1	12,085	7.1	12,455	7.3	23,785	14.0	54,290	31.9	40,180	23.6	15,255	9.0
Gore	2,770	8.2	2,935	8.7	2,755	8.2	4,590	13.6	11,310	33.6	6,995	20.8	2,305	6.8
Heartlake	7,210	8.6	6,965	8.3	7,210	8.6	11,545	13.7	29,600	35.2	17,565	20.9	4,095	4.9
Town of Caledon	3,665	6.4	4,285	7.5	4,560	8.0	7,415	13.0	16,635	29.2	15,345	26.9	5,155	9.0
Bolton	2,640	8.0	2,800	8.5	2,745	8.3	3,950	11.9	10,900	33.0	7,475	22.6	2,575	7.8
Caledon (Urban)	615	4.1	895	5.9	1,155	7.7	2,205	14.6	3,635	24.1	4,870	32.3	1,680	11.2

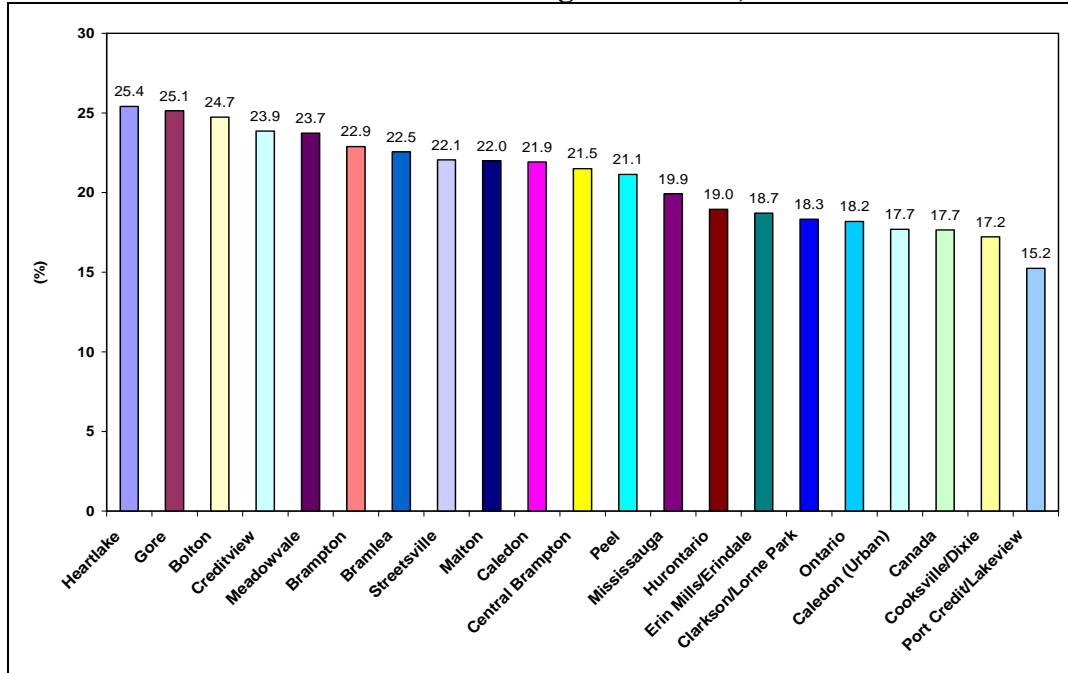
Source: Statistics Canada, Census of Canada, 2006.

Figure 2. Age & Sex Pyramid: Peel, 2006



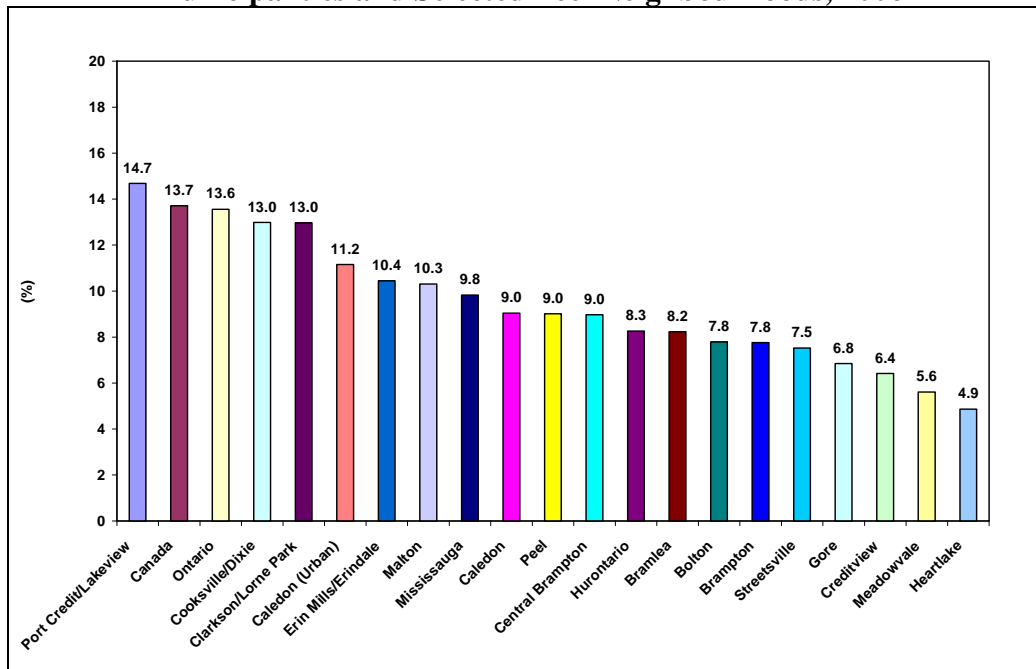
Source: Statistics Canada, Census of Canada, 2006

Figure 3. Population by Age Group (0-14): Canada, Ontario, Peel, Peel’s Municipalities and Selected Peel Neighbourhoods, 2006



Source: Statistics Canada, Census of Canada, 2006.

Figure 4. Population by Age Group 65 and Over: Canada, Ontario, Peel, Peel’s Municipalities and Selected Peel Neighbourhoods, 2006



Source: Statistics Canada, Census of Canada, 2006.

Figure 5

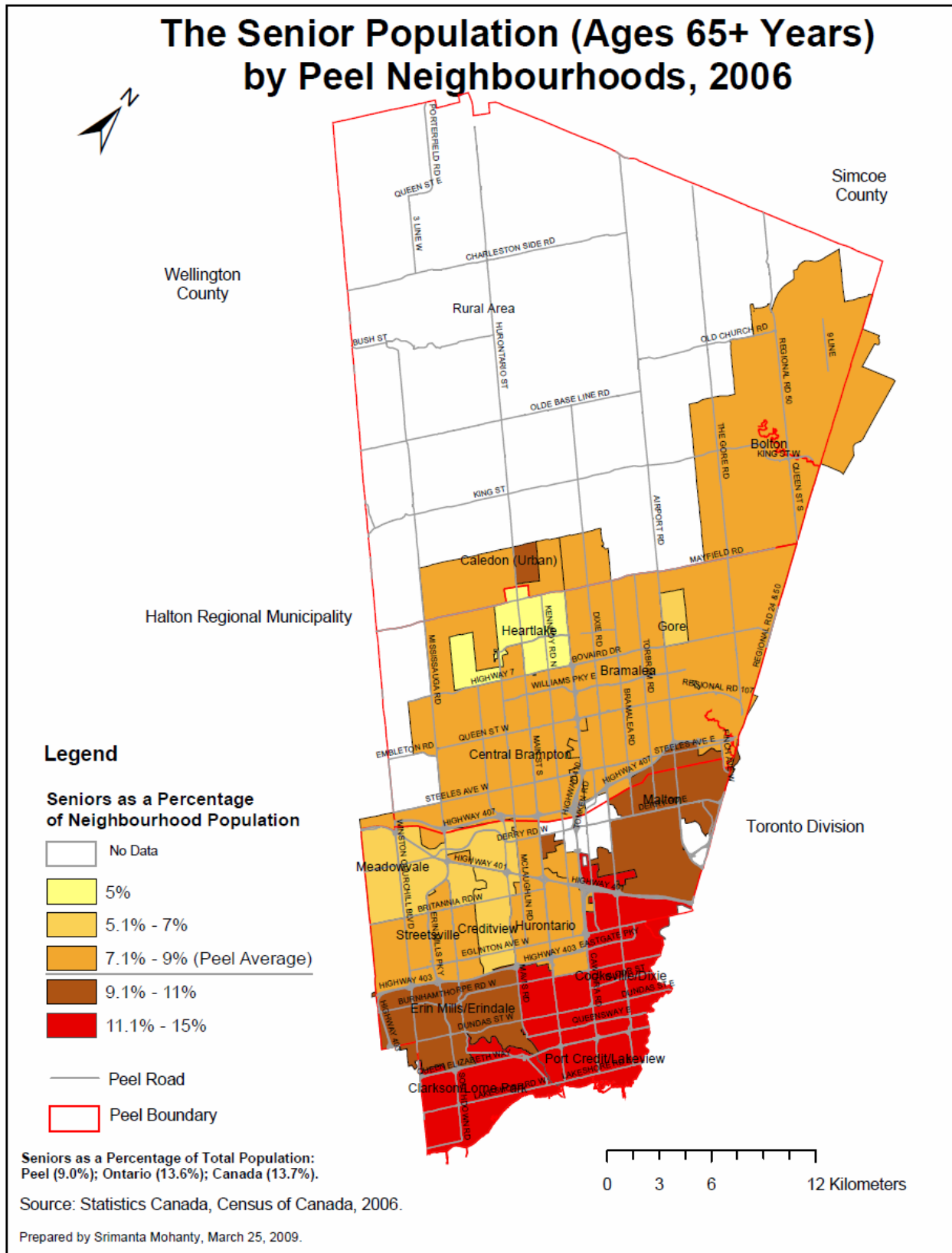


Table 3A Population by Age Group: Peel, 2001 & 2006						
Age Group	2001		2006		Rate of Change 2001-2006	
	#	%	#	%	#	%
0-14	217,290	22.0	244,990	21.1	27,700	12.7
15-24	138,095	14.0	163,165	14.1	25,070	18.2
25-44	329,760	33.3	360,285	31.1	30,525	9.3
45-64	224,995	22.8	286,420	24.7	61,425	27.3
65+ years	78,805	8.0	104,520	9.0	25,715	32.6
Total Population	988,945	100.0	1,159,400	100.0	170,455	17.2
Table 3B Population by Age Group: Mississauga, 2001 & 2006						
Age Group	2001		2006		Rate of Change 2001-2006	
	#	%	#	%	#	%
0-14	130,465	21.3	133,175	19.9	2,710	2.1
15-24	85,460	13.9	95,380	14.3	9,920	11.6
25-44	202,820	33.1	202,380	30.3	-440	-2.2
45-64	142,030	23.2	171,905	25.7	29,875	23.2
65+ years	52,150	8.5	65,690	9.8	13,540	8.5
Total Population	612,925	100.0	668,545	100.0	55,620	9.1
Table 3C Population by Age Group: Brampton, 2001 & 2006						
Age Group	2001		2006		Rate of Change 2001-2006	
	#	%	#	%	#	%
0-14	75,215	23.1	99,305	22.9	24,090	32.0
15-24	46,440	14.3	60,370	13.9	13,930	30.0
25-44	110,550	34.0	141,270	32.6	30,720	27.8
45-64	70,555	21.7	99,170	22.9	28,615	40.6
65+ years	22,670	7.0	33,675	7.8	11,005	48.5
Total Population	325,430	100.0	433,805	100.0	108,375	33.3
Table 3D Population by Age Group: Caledon, 2001 & 2006						
Age Group	2001		2006		Rate of Change 2001-2006	
	#	%	#	%	#	%
0-14	11,595	22.9	12,510	21.9	915	7.9
15-24	6,195	12.2	7,415	13.0	1,220	19.7
25-44	16,400	32.4	16,635	29.2	235	1.4
45-64	12,410	24.5	15,345	26.9	2,935	23.7
65+ years	3,995	7.9	5,155	9.0	1,160	29.0
Total Population	50,595	100.0	57,050	100.0	6,455	12.7

 Source: Statistics Canada, Census of Canada, 2001 & 2006.

C. HIGHLIGHTS: PEEL'S IMMIGRANT POPULATION, 2006

- In 2006, 48.6% (or 561,240) of Peel's total population was comprised of immigrants, a figure considerably higher than the respective Ontario figure of 28.3%, and the Canadian figure of 19.8%.
- Of the three municipalities in Peel, Mississauga had the highest proportion of immigrants in 2006: 51.6%, followed by Brampton with 47.8%, and Caledon with 20.8%.
- The three Peel neighbourhoods with the largest proportion of immigrants in 2006 were: Malton (64.1%), Creditview (62.3%), and Hurontario (59.9%).
- In 2006, the Peel neighbourhoods with the lowest proportion of immigrants were: Bolton (20.5%), Caledon Urban (23.3%) and Port Credit/Lakeview (33%).
- South Asians are the single largest immigrant group in Peel (30.1%).
- At the municipal level, Southern Asia was the most common place of birth for 40.4% and 24.7% of immigrants living in Brampton and Mississauga.
- Europeans are the single largest immigrant group in Caledon.
- Between 2001 and 2006, the immigrant population of Peel grew by 32.1%, compared to only 13.6% for Canada and 12.2% for Ontario.
- Brampton's immigrant population growth rate of 59.5% between 2001 and 2006 was the highest among the three municipalities in Peel, and it was about three (3) times that of Mississauga (20.2%) and Caledon (19.4%).
- The three Peel neighbourhoods that recorded the highest growth rate in their immigrant population between 2001 and 2006 were: Gore (1,772.5%), Caledon Urban (393%) and Streetsville (73.7%).
- The three Peel neighbourhoods with the smallest rate of change to their immigrant population between 2001 and 2006 were: Malton (0.5%), Clarkson/Lorne Park (2.2%) and Port Credit/Lakeview (2.0%).

Table 4. The Immigrant Population: Canada, Ontario, Peel, Mississauga, Brampton and Caledon, 2006

Region	Non-Immigrant Population		Immigrant Population		Non-Permanent Residents		Total Population by Immigration Status	
	#	%	#	%	#	%	#	%
Canada	24,788,720	79.3	6,186,950	19.8	265,360	0.8	31,241,030	100.0
Ontario	8,512,020	70.8	3,398,725	28.3	118,150	1.0	12,028,895	100.0
Peel	581,875	50.4	561,240	48.6	10,950	0.9	1,154,070	100.0
City of Mississauga	314,965	47.3	343,245	51.6	7,445	1.1	665,655	100.0
City of Brampton	222,080	51.5	206,185	47.8	3,305	0.8	431,575	100.0
Town of Caledon	44,830	78.9	11,805	20.8	200	0.4	56,840	100.0

Source: Statistics Canada, Census of Canada, 2006.

Table 5. Rate of Growth in the Immigrant Population: Canada, Ontario, Peel, Peel's Municipalities and Selected Peel Neighbourhoods, 2001 & 2006

Region & Neighbourhoods	Immigrant Population 2001		Immigrant Population 2006		Rate of Growth (Immigrant Population) 2001-2006	
	#	%	#	%	#	%
	Canada	5,448,480	18.4	6,186,945	19.8	738,465
Ontario	3,030,075	26.8	3,398,725	28.3	368,650	12.2
Peel	424,820	43.1	561,235	48.6	136,415	32.1
City of Mississauga	285,650	46.8	343,245	51.6	57,595	20.2
Clarkson/Lorne Park	15,025	32.6	15,355	33.6	330	2.2
Cooksville/Dixie	84,420	53.6	92,600	57.7	8,180	9.7
Creditview	20,940	56.8	29,630	62.3	8,690	41.5
Erin Mills/Erindale	40,150	42.4	41,990	45.9	1,840	4.6
Hurontario	35,205	56.3	40,220	59.9	5,015	14.2
Malton	24,230	58.9	24,340	64.1	110	0.5
Meadowvale	30,270	36.0	44,775	43.4	14,505	47.9
Port Credit/ Lakeview	10,335	31.8	10,540	33.0	205	2.0
Streetsville	25,150	45.4	43,685	54.6	18,535	73.7
City of Brampton	129,280	39.9	206,185	47.5	76,905	59.5
Bramalea	53,225	41.3	72,295	49.7	19,070	35.8
Central Brampton	62,335	40.5	78,760	46.6	16,425	26.3
Gore	1,000	44.3	18,725	56.4	17,725	1,772.5
Heartlake	12,625	32.5	36,500	43.5	23,875	189.1
Town of Caledon	9,890	19.6	11,805	20.7	1,915	19.4
Bolton	5,245	20.5	6,765	20.5	1,520	29.0
Caledon (Urban)	710	26.1	3,500	23.3	2,790	393.0

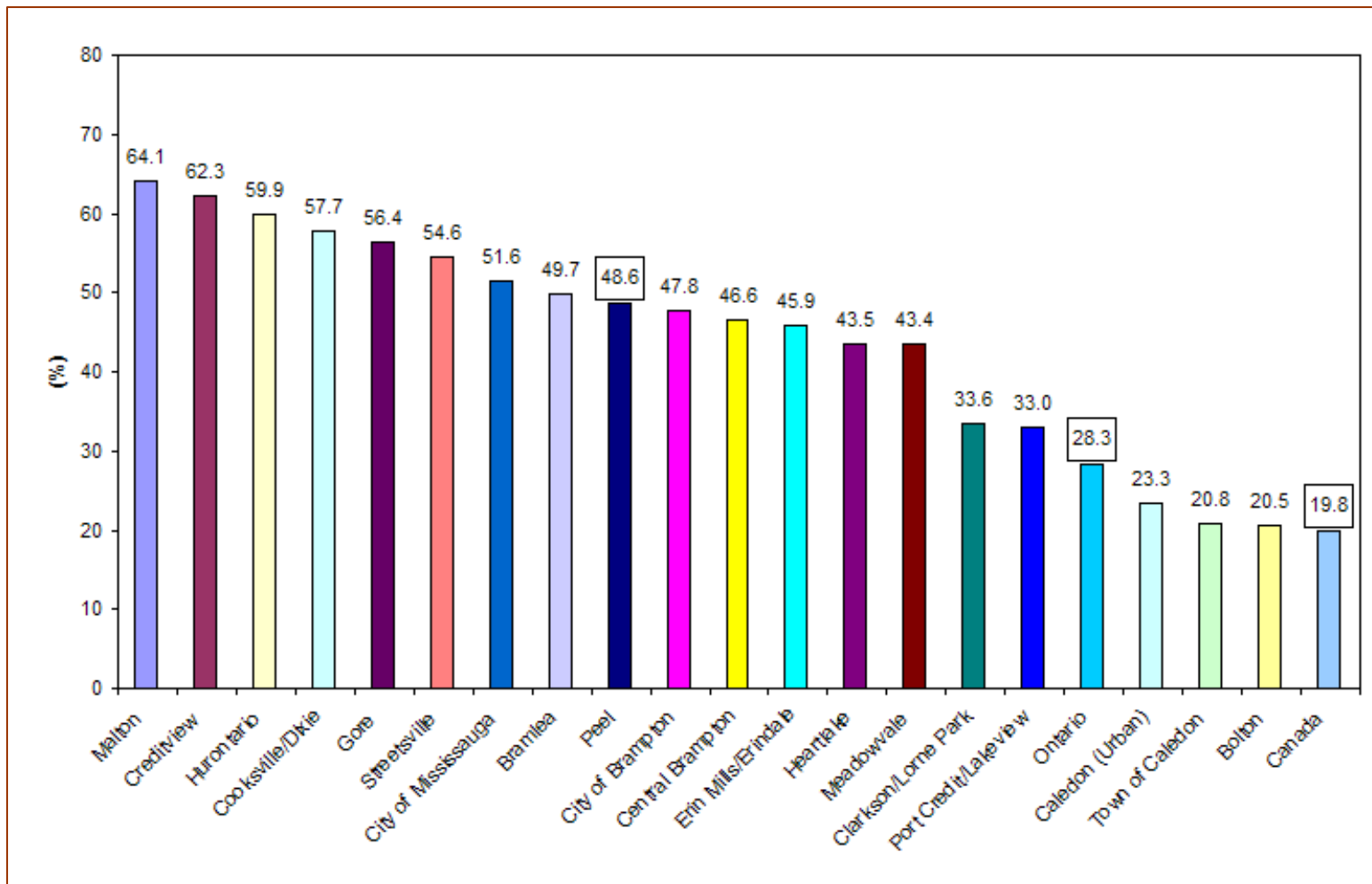
Source: Statistics Canada, Census of Canada, 2001; 2006.

**Table 6.
Immigrants by Top Three Places of Birth: Canada, Ontario, Peel, Peel's Municipalities and Selected Peel Neighbourhoods, 2006**

Region & Neighbourhoods	% of 2006 Population								
	Top 1			Top 2			Top 3		
	Place of Birth	#	%	Place of Birth	#	%	Place of Birth	#	%
Canada	Eastern Asia	874,365	14.1	Southern Asia	719,275	11.6	Southern Europe	698,080	11.3
Ontario	Southern Asia	473,915	13.9	Southern Europe	472,130	13.9	Eastern Asia	417,985	12.3
Peel	Southern Asia	168,750	30.1	Southern Europe	63,380	11.3	Southeast Asia	53,130	9.5
City of Mississauga	Southern Asia	84,925	24.7	Southern Europe	40,380	11.8	Southeast Asia	38,260	11.1
Clarkson/Lorne Park	Eastern Europe	2,695	17.6	Northern Europe	2,355	15.3	Southern Europe	1,905	12.4
Cooksville/Dixie	Southern Asia	18,025	19.5	Southern Europe	15,210	16.4	Eastern Europe	13,900	15.0
Creditview	Southern Asia	8,675	29.3	Southeast Asia	5,060	17.1	Eastern Asia	3,925	13.2
Erin Mills/Erindale	Southern Asia	9,295	22.1	Eastern Europe	4,995	11.9	Eastern Asia	4,725	11.3
Hurontario	Southern Asia	10,325	25.7	Southeast Asia	5,405	13.4	Southern Europe	5,065	12.6
Malton	Southern Asia	13,335	54.8	Caribbean & Bermuda	3,895	16.0	Southern Europe	2,200	9.0
Meadowvale	Southern Asia	12,020	26.8	Southeast Asia	4,965	11.1	Caribbean & Bermuda	4,090	9.1
Port Credit/ Lakeview	Eastern Europe	2,470	23.4	Southern Europe	2,435	23.1	Northern Europe	1,615	15.3
Streetsville	Southern Asia	11,300	25.9	Eastern Asia	6,795	15.6	Southeast Asia	5,300	12.1
City of Brampton	Southern Asia	83,245	40.4	Caribbean & Bermuda	28,075	13.6	Southern Europe	18,805	9.1
Bramalea	Southern Asia	32,235	44.6	Caribbean & Bermuda	9,015	12.5	South American	5,630	7.8
Central Brampton	Southern Asia	30,795	39.1	Caribbean & Bermuda	10,680	13.6	Southern Europe	9,140	11.6
Gore	Southern Asia	9,650	51.5	Caribbean & Bermuda	1,695	9.1	Southern Europe	1,490	8.0
Heartlake	Southern Asia	10,645	29.2	Caribbean & Bermuda	6,670	18.3	Southern Europe	3,895	10.7
Town of Caledon	Southern Europe	4,195	35.5	Northern Europe	2,395	20.3	Eastern Europe	1,055	8.9
Bolton	Southern Europe	2,745	40.6	Northern Europe	1,050	15.5	Eastern Europe	715	10.6
Caledon (Urban)	Southern Europe	1,215	34.7	Northern Europe	805	23.0	Southern Asia	315	9.0

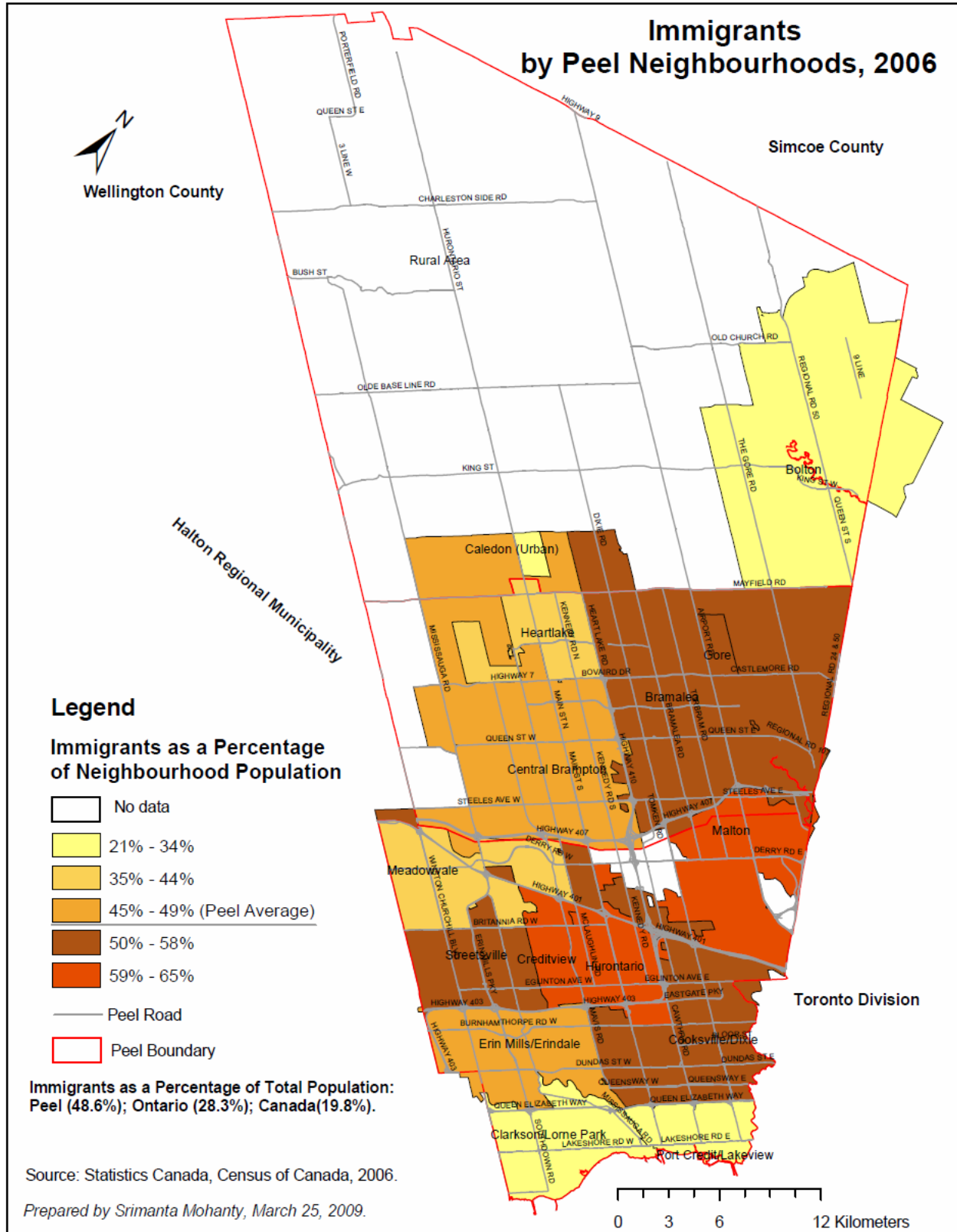
Source: Statistics Canada, Census of Canada, 2006.

Figure 6. The Immigrant Population: Canada, Ontario, Peel, Peel’s Municipalities and Selected Peel Neighbourhoods, 2006



Source: Statistics Canada, Census of Canada, 2006.

Figure 7



D. HIGHLIGHTS: VISIBLE MINORITY GROUPS IN PEEL, 2006

- Peel is more racially diverse than Ontario and Canada. *Under the Employment Equity Act of Canada, members of visible minorities are persons, other than Aboriginal persons, who are not white in race or colour.*
- In 2006, Peel had 50.0% (or 576,665) of its population reporting themselves as visible minorities, compared to 22.8% in Ontario and 16.2% in Canada.
- The three largest groups of visible minorities in Peel were South Asians (272,765), Blacks (95,570), and Chinese (54,290). In 2006, Brampton had a higher proportion of visible minorities than Mississauga (57.0% versus 49.0% respectively). Only 7.2% of Caledon's population identified themselves as visible minorities. From this perspective, Caledon is almost racially homogenous compared to the very racially diverse Mississauga and Brampton.
- At the neighbourhood level, Malton, Gore and Creditview had the highest proportions of visible minorities in 2006 (77.7%, 76.7% and 71.6% respectively). With the exception of the neighbourhoods in the Town of Caledon, those with the lowest proportions of visible minorities are Port Credit/Lakeview, Clarkson/Lorne Park, and Erin Mills/Erindale (15.3%, 21.5% and 41.9% respectively).
- The rate of growth in the visible minority population of Peel between 2001 and 2006 was 52.1%, almost two times that of Canada (27.2%) and Ontario (27.5).
- At the city level, Caledon recorded the second highest visible minority population growth rate (62.6%) over the 2001/2006 period. The growth rate of the visible minority population in Brampton was the highest at 88.9%, while Mississauga had the lowest at 32.5%.
- Two of the three neighbourhoods with the highest rate of growth in their visible minority population between 2001 and 2006 were in the City of Brampton, Gore (1,766.3%) and Heartlake (286%). The neighbourhood of Caledon (Urban) had the third highest growth rate of 214.1% in their visible minority population over the same period.
- In contrast, the three neighbourhoods with the lowest growth rate in their visible minority population were located in Mississauga: Malton (4.1%); Erin Mills/Erindale (10.7%) and Clarkson/Lorne Park (14.3%).

**Table 7. The Visible Minority Population: Canada, Ontario, Peel,
Mississauga, Brampton and Caledon, 2006**

	NUMBER					
	Canada	Ontario	Peel	Mississauga	Brampton	Caledon
Total population by visible minority groups - 20% sample data	31,241,030	12,028,895	1,154,065	665,655	431,575	56,840
Non visible minority Population	26,172,935	9,283,690	577,400	339,230	185,430	52,745
Total visible minority population	5,068,090	2,745,205	576,665	326,425	246,145	4,090
Chinese	1,216,565	576,980	54,290	46,125	7,805	355
South Asian	1,262,865	794,170	272,765	134,750	136,750	1,265
Black	783,795	473,760	95,570	41,365	53,340	860
Filipino	410,695	203,220	42,900	30,705	11,980	215
Latin American	304,245	147,135	21,440	12,410	8,545	480
Southeast Asian	239,935	110,045	20,465	14,160	6,130	180
Arab	265,550	111,405	19,510	16,785	2,605	120
West Asian	156,700	96,620	8,935	6,010	2,875	50
Korean	141,895	69,540	7,515	6,865	575	70
Japanese	81,300	28,080	3,070	2,430	545	95
Visible minority, n.i.e.	71,420	56,845	14,800	5,720	8,895	185
Multiple visible minority	133,120	77,405	15,400	9,095	6,095	205
	PERCENT					
	Canada	Ontario	Peel	Mississauga	Brampton	Caledon
Total population by visible minority groups - 20% sample data	100.0	100.0	100.0	100.0	100.0	100.0
Non visible minority Population	83.8	77.2	50.0	51.0	43.0	92.8
Total visible minority population	16.2	22.8	50.0	49.0	57.0	7.2
Chinese	3.9	4.8	4.7	6.9	1.8	0.6
South Asian	4.0	6.6	23.6	20.2	31.7	2.2
Black	2.5	3.9	8.3	6.2	12.4	1.5
Filipino	1.3	1.7	3.7	4.6	2.8	0.4
Latin American	1.0	1.2	1.9	1.9	2.0	0.8
Southeast Asian	0.8	0.9	1.8	2.1	1.4	0.3
Arab	0.9	0.9	1.7	2.5	0.6	0.2
West Asian	0.5	0.8	0.8	0.9	0.7	0.1
Korean	0.5	0.6	0.7	1.0	0.1	0.1
Japanese	0.3	0.2	0.3	0.4	0.1	0.2
Visible minority, n.i.e.	0.2	0.5	1.3	0.9	2.1	0.3
Multiple visible minority	0.4	0.6	1.3	1.4	1.4	0.4

Source: Source: Statistics Canada, Census of Canada, 2006.

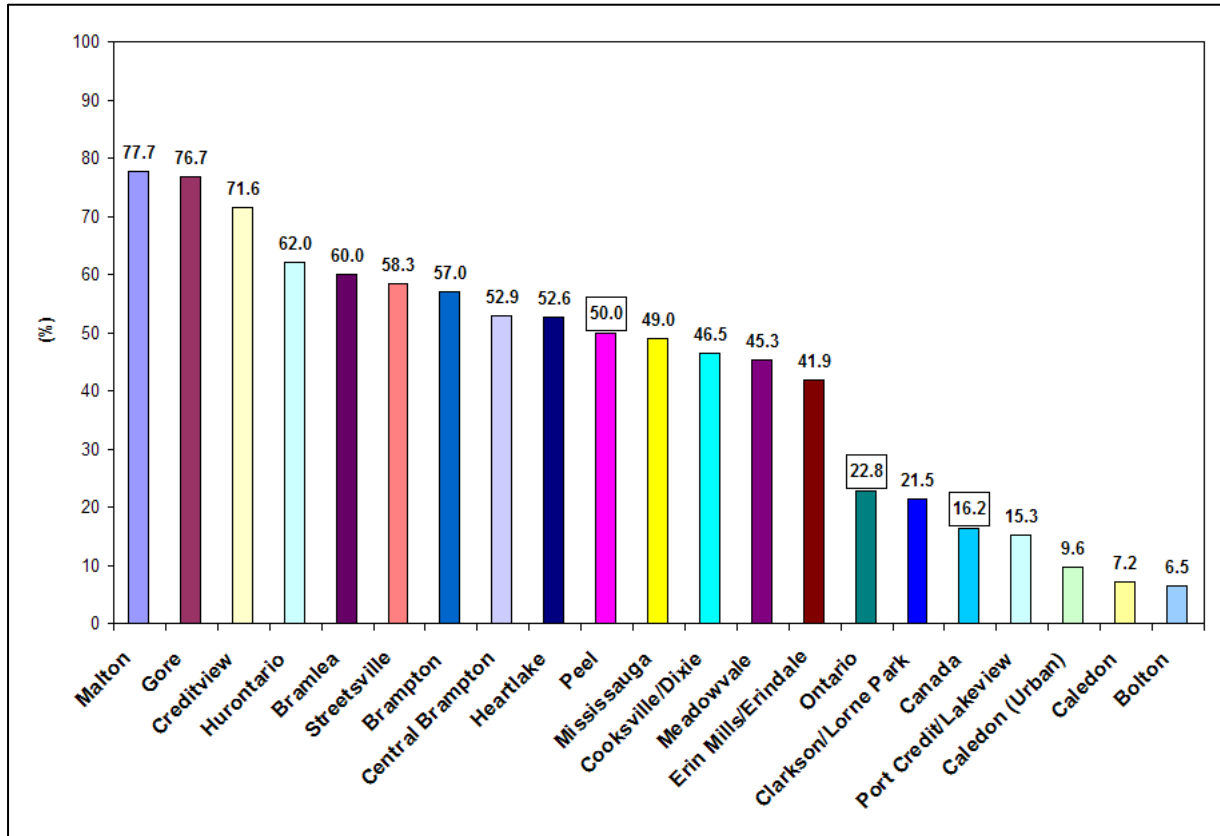
Table 8. The Rate of Growth in the Visible Minority Population: Peel, 2001-2006

Region & Neighbourhoods	2001		2006		Rate of Growth (Visible Minority Population) 2001-2006	
	#	%	#	%	#	%
Canada	3,983,845	13.4	5,068,095	16.2	1,084,250	27.2
Ontario	2,153,045	19.1	2,745,200	22.8	592,155	27.5
Peel	379,105	38.5	576,665	50.0	197,560	52.1
City of Mississauga	246,325	40.3	326,425	49.0	80,100	32.5
Clarkson/Lorne Park	8,600	18.7	9,830	21.5	1,230	14.3
Cooksville/Dixie	63,125	40.1	74,630	46.5	11,505	18.2
Creditview	22,410	60.8	34,055	71.6	11,645	52.0
Erin Mills/Erindale	34,595	36.5	38,280	41.9	3,685	10.7
Hurontario	34,310	54.9	41,590	62.0	7,280	21.2
Malton	28,375	69.0	29,540	77.7	1,165	4.1
Meadowvale	26,570	31.6	46,770	45.3	20,200	76.0
Port Credit/ Lakeview	4,010	12.3	4,885	15.3	875	21.8
Streetsville	24,470	44.2	46,700	58.3	22,230	90.8
City of Brampton	130,290	40.2	246,150	57.0	115,860	88.9
Bramalea	55,515	42.8	87,255	60.0	31,740	57.2
Central Brampton	62,160	40.4	89,420	52.9	27,260	43.9
Gore	1,365	60.4	25,475	76.7	24,110	1766.3
Heartlake	11,430	29.4	44,125	52.6	32,695	286.0
Town of Caledon	2,515	5.0	4,090	7.2	1,575	62.6
Bolton	1,305	5.1	2,135	6.5	830	63.6
Caledon (Urban)	460	16.8	1,445	9.6	985	214.1

*Visible Minority Population as a % of Total Population.

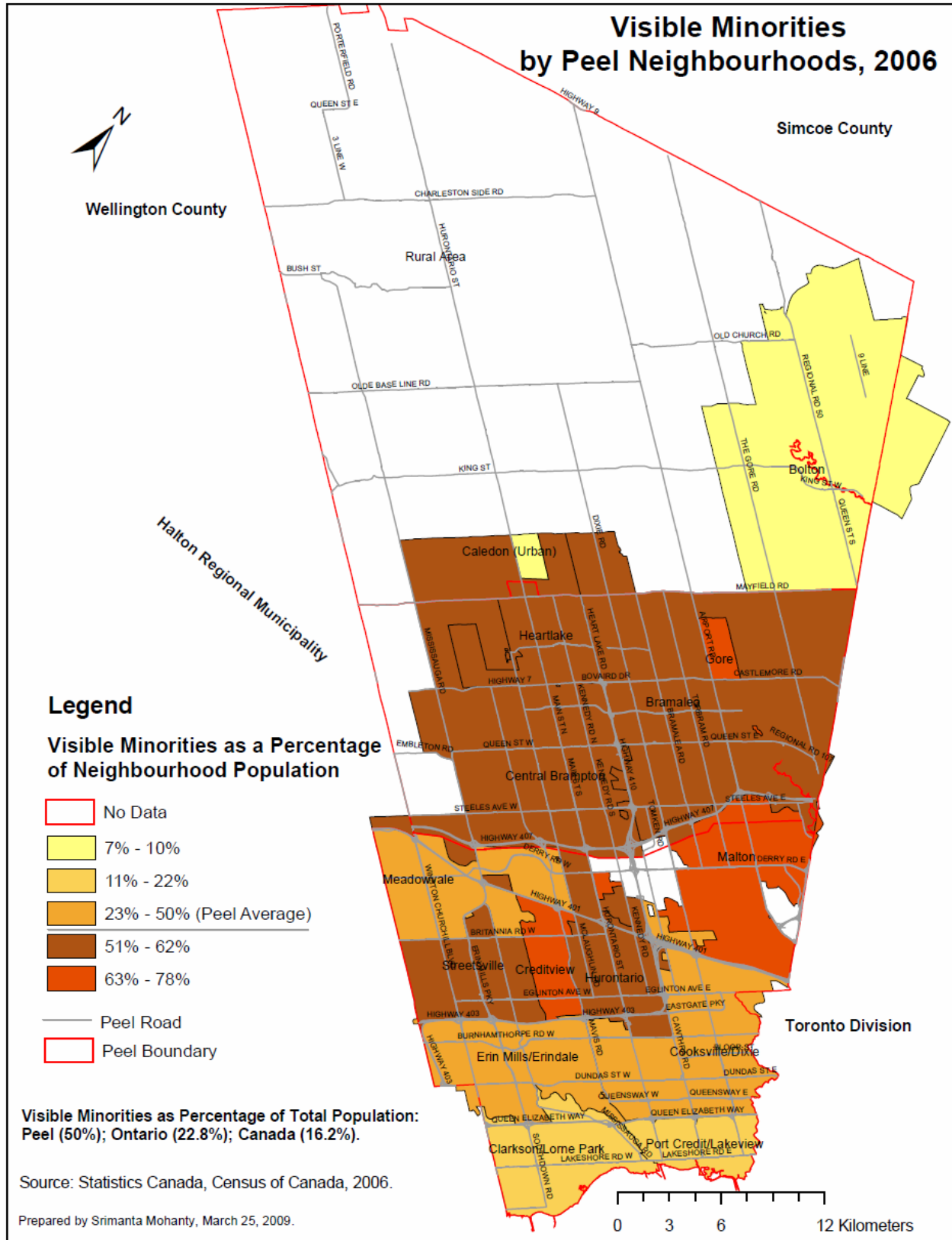
Source: Source: Statistics Canada, Census of Canada, 2001; 2006.

Figure 8. The Visible Minority Population: Canada, Ontario, Peel, Peel's Municipalities and Selected Peel Neighbourhoods, 2006



Source: Source: Statistics Canada, Census of Canada, 2006.

Figure 9



E. HIGHLIGHTS: MOTHER TONGUE LANGUAGE, 2006

- In 2006, Peel had a lower percentage of people whose first language was English compared to Ontario and Canada (52.3% vs. 68.4% and 57.2%, respectively). In Peel, aside from English, the top three mother tongue languages were Punjabi (8.0%), Urdu (3.7%) and Chinese (3.6%).
- In 2006, 44.3% of the Peel population reported speaking a non-official language as their mother tongue. In contrast, 26.1% of Ontario's population reported speaking a mother tongue other than English or French (based on single responses).
- Of the three municipalities in Peel, Mississauga had the lowest proportion of people whose first language was English.
- Mississauga was the only municipality in Peel to record a decline between 2001 and 2006 in the number of people whose first language was English (-2.8%). For the same period, the number of people who spoke English only in Brampton and Caledon increased by 13% and 7.8% respectively.
- At the neighbourhood level, Creditview, Gore, Hurontario, Cooksville/Dixie and Malton had the lowest proportions of people whose first language was English.
- For Peel, the number of people whose mother tongue is neither English nor French increased by 38.4% between 2001 and 2006, compared to a 17.3% increase in Ontario.
- Between 2001 and 2006, more people reported English as their first language, increasing at a rate of about 3% in Canada generally, Ontario (3.3%) and Peel (3.6%).
- Between 2001 and 2006, four (4) neighbourhoods recorded significant declines in the number of people whose first language was English: Malton (-16.6%); Erin Mills/Erindale (-11.8%) and Cooksville/Dixie (8.2%).
- Between 2001 and 2006, the number of people who spoke a non-official language increased by 73.5% for Brampton in 33.4% in Caledon and 24.2% in Mississauga.
- Between 2001 and 2006, the rate of change in the proportion of the population who spoke a non-official language was very high in Gore, Caledon (Urban) and Heartlake (1,665%, 573.7% and 215.3%, respectively).

Table 9. Population by Mother Tongue Language: Canada, Ontario, Peel, Mississauga, Brampton and Caledon, 2006

Region	Total Population by Mother Tongue		Multiple Responses		English		French		Non-official Languages	
	#	%	#	%	#	%	#	%	#	%
Canada	31,241,030	100.0	392,760	1.3	17,882,775	57.2	6,817,655	21.8	6,147,840	19.7
Ontario	12,028,895	100.0	175,330	1.5	8,230,705	68.4	488,815	4.1	3,134,045	26.1
Peel	1,154,070	100.0	27,895	2.4	603,450	52.3	11,975	1.0	510,750	44.3
City of Mississauga	665,660	100.0	17,180	2.6	323,295	48.6	7,840	1.2	317,345	47.7
City of Brampton	431,575	100.0	9,990	2.3	236,720	54.9	3,610	0.8	181,255	42.0
Town of Caledon	56,840	100.0	725	1.3	43,430	76.4	525	0.9	12,160	21.4

Source: Statistics Canada, Census of Canada, 2006.

Table 10. Rate of Growth in the Population by Mother Tongue Language: Peel, 2001-2006

Region & Neighbourhoods	English Only 2001		English Only 2006		Rate of Growth (English) 2001-2006	
	#	%	#	%	#	%
	Canada	17,352,315	58.5	17,882,770	57.2	530,455
Ontario	7,965,225	70.6	8,230,705	68.4	265,480	3.3
Peel	582,350	59.1	603,445	52.3	21,095	3.6
City of Mississauga	332,645	54.5	323,295	48.6	-9,350	-2.8
Clarkson/Lorne Park	33,285	72.3	32,085	70.1	-1,200	-3.6
Cooksville/Dixie	70,425	44.7	64,630	40.3	-5,795	-8.2
Creditview	15,600	42.3	16,815	35.3	1,215	7.8
Erin Mills/Erindale	57,245	60.4	50,510	55.2	-6,735	-11.8
Hurontario	27,360	43.8	25,235	37.6	-2,125	-7.8
Malton	18,665	45.4	15,560	41.0	-3,105	-16.6
Meadowvale	57,395	68.3	60,450	58.6	3,055	5.3
Port Credit/ Lakeview	22,035	67.8	21,550	67.4	-485	-2.2
Streetsville	30,650	55.3	36,440	45.5	5,790	18.9
City of Brampton	209,410	64.6	236,720	54.9	27,310	13.0
Bramalea	82,330	63.9	77,860	53.5	-4,470	-5.4
Central Brampton	97,200	63.1	94,395	55.8	-2,805	-2.9
Gore	1,065	47.1	12,485	37.6	11,420	1072.3
Heartlake	28,495	73.2	51,935	61.8	23,440	82.3
Town of Caledon	40,290	80.0	43,430	76.4	3,140	7.8
Bolton	19,460	76.0	24,340	73.8	4,880	25.1
Caledon (Urban)	2,220	81.3	11,470	76.4	9,250	416.7

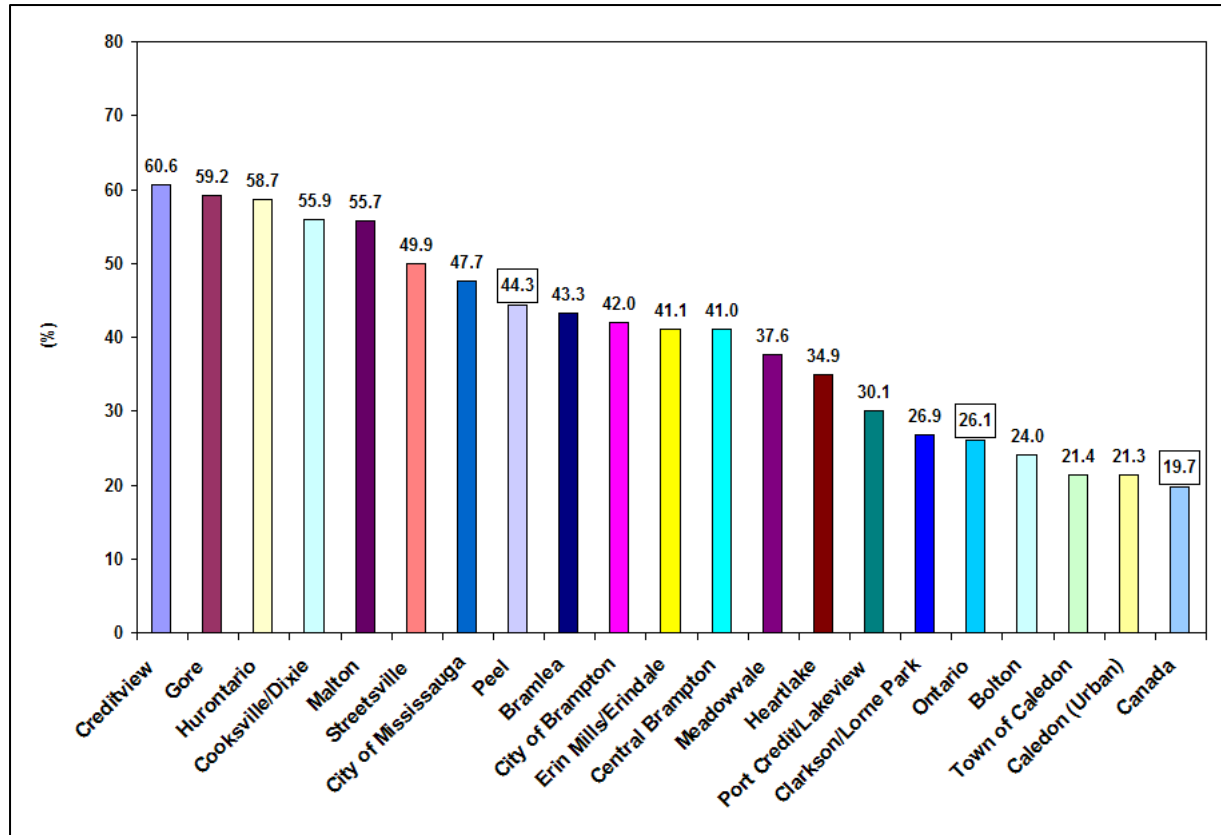
Source: Statistics Canada, Census of Canada, 2006.

Table 11. Rate of Growth in the Population by Non-Official Languages: Peel, 2001-2006

Region & Neighbourhoods	Non-Official Languages 2001		Non-Official Languages 2006		Rate of Growth (Non-Official Languages)	
					2001-2006	
	#	%	#	%	#	%
Canada	5,202,240	17.6	6,147,830	19.7	945,590	18.2
Ontario	2,672,085	23.7	3,134,045	26.1	461,960	17.3
Peel	369,150	37.5	510,760	44.3	141,610	38.4
City of Mississauga	255,570	41.8	317,345	47.7	61,775	24.2
Clarkson/Lorne Park	11,280	24.5	12,285	26.9	1,005	8.9
Cooksville/Dixie	80,935	51.4	89,625	55.9	8,690	10.7
Creditview	19,675	53.3	28,825	60.6	9,150	46.5
Erin Mills/Erindale	34,185	36.1	37,545	41.1	3,360	9.8
Hurontario	32,730	52.4	39,390	58.7	6,660	20.3
Malton	21,055	51.2	21,170	55.7	115	0.5
Meadowvale	23,545	28.0	38,780	37.6	15,235	64.7
Port Credit/ Lakeview	9,495	29.2	9,610	30.1	115	1.2
Streetsville	22,705	41.0	39,970	49.9	17,265	76.0
City of Brampton	104,465	32.2	181,255	42.0	76,790	73.5
Bramalea	42,050	32.6	63,000	43.3	20,950	49.8
Central Brampton	51,855	33.7	69,380	41.0	17,525	33.8
Gore	1,115	49.3	19,680	59.2	18,565	1665.0
Heartlake	9,295	23.9	29,310	34.9	20,015	215.3
Town of Caledon	9,115	18.1	12,160	21.4	3,045	33.4
Bolton	5,535	21.6	7,915	24.0	2,380	43.0
Caledon (Urban)	475	17.4	3,200	21.3	2,725	573.7

Source: Statistics Canada, Census of Canada, 2006.

Figure 10. People Speaking Non-Official Languages: Canada, Ontario, Peel, Peel’s Municipalities and Selected Peel Neighbourhoods, 2006



Source: Statistics Canada, Census of Canada, 2006.

Table 12. Population by Mother Tongue Language: Peel, 2006

	#	%
Total Population by Mother Tongue	1,154,070	100.0
Multiple responses	27,895	2.4
Single responses	1,126,175	97.6
English	603,450	52.3
French	11,975	1.0
Non-official languages	510,750	44.3
Punjabi (Punjabi)	92,820	8.0
Urdu	42,970	3.7
Chinese	41,855	3.6
Polish	34,830	3.0
Portuguese	31,795	2.8
Italian	30,920	2.7
Tagalog (Pilipino, Filipino)	25,220	2.2
Spanish	23,620	2.0
Arabic	20,475	1.8
Tamil	16,045	1.4
Other Languages	150,200	13.0

Source: Statistics Canada, Census of Canada, 2006.

II. Household and Family Characteristics

A. HIGHLIGHTS: MARITAL STATUS IN PEEL, 2006

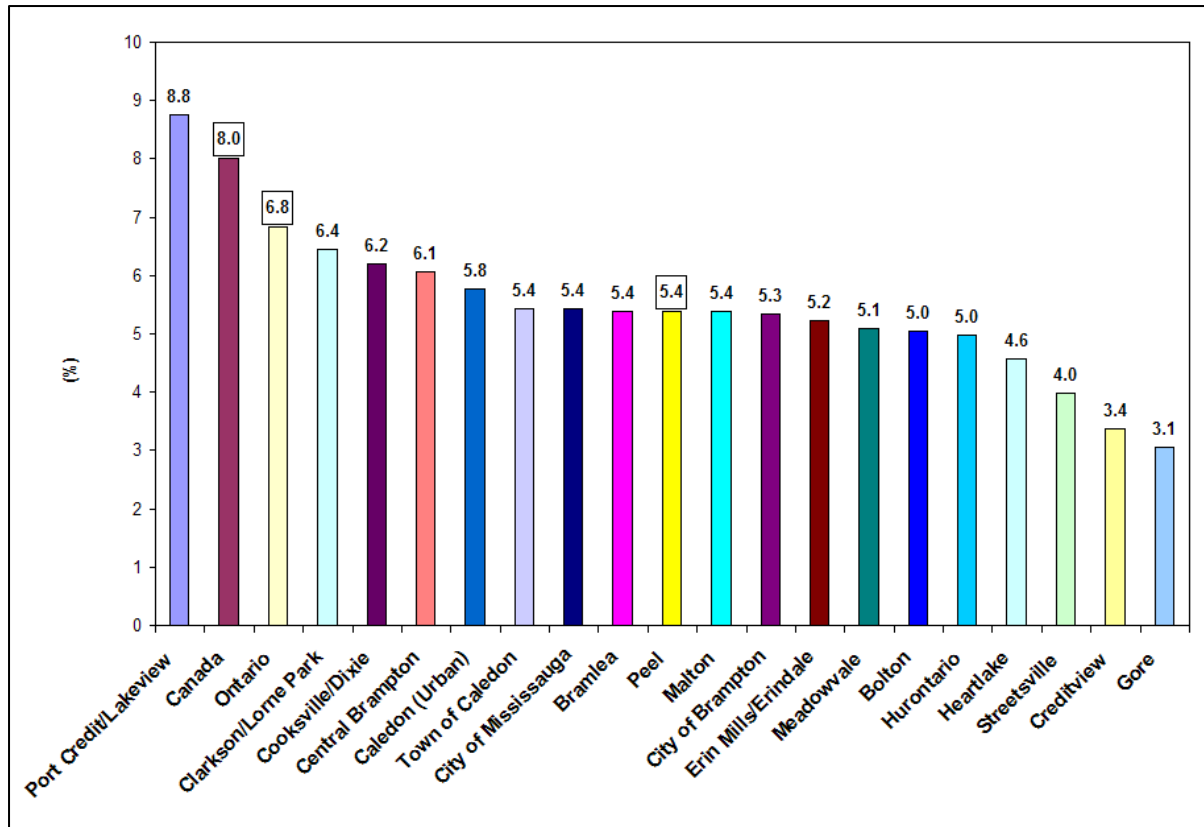
- In 2006, the majority of the population aged 15 years and over in Peel were legally married (56.9%). The next largest group was the singles group (30.2%), followed by the divorced group (5.4%).
- Peel had a higher proportion of married people than Ontario and Canada in 2006 (56.9% vs. 51.9% & 47.9%, respectively).
- Peel had a lower proportion of divorced people compared to Ontario and Canada in 2006. (5.4% vs. 6.8% & 8.0%, respectively).
- At the city level, Caledon had a higher proportion of married people than Brampton and Mississauga in 2006 (61.7% vs. 57.3% and 56.3%, respectively).
- In 2006, the neighbourhood with the highest proportion of divorced persons was Port Credit/Lakeview (8.8%).
- The neighbourhood with the lowest proportion of divorced persons was Gore (3.1%).
- The number of single adults in Peel (never/not yet married) increased by 20.1%, (from 230,485 to 276,525), between 2001 and 2006.
- Between 2001 and 2006, the number of legally married (and not separated) people in Peel increased by 17.5%, from 442,895 to 520,350 people.
- Between 2001 and 2006, the number of widowed people increased by 21.3%, from 33,805 to 41,000, while the number of divorced or separated people increased by 18.7%, from 64,475 to 76,530 over the same period.

Table 13. Population (age 15+) by Marital Status: Canada, Ontario, Peel, Mississauga, Brampton, Caledon, 2006

Region & Neighbourhoods	Single		Married		Widowed		Divorced		Separated		Total Population Aged 15+ Years	
	#	%	#	%	#	%	#	%	#	%	#	%
Canada	9,087,030	34.9	12,470,395	47.9	1,612,820	6.2	2,087,385	8.0	775,420	3.0	26,033,050	100.0
Ontario	3,143,960	31.6	5,168,660	51.9	611,800	6.1	679,990	6.8	345,075	3.5	9,949,485	100.0
Peel	276,525	30.2	520,350	56.9	41,000	4.5	49,270	5.4	27,260	3.0	914,405	100.0
City of Mississauga	164,605	30.7	301,195	56.3	25,125	4.7	29,020	5.4	15,425	2.9	535,370	100.0
Clarkson/Lorne Park	11,375	30.3	20,525	54.7	1,985	5.3	2,420	6.0	1,240	3.0	37,555	100.0
Cooksville/Dixie	41,500	31.0	71,770	53.7	7,800	5.8	8,275	6.0	4,360	3.0	133,715	100.0
Creditview	11,160	30.6	21,985	60.3	1,335	3.7	1,230	3.0	725	2.0	36,435	100.0
Erin Mills/Erindale	23,915	32.1	41,240	55.3	3,430	4.6	3,890	5.0	2,120	3.0	74,590	100.0
Hurontario	17,630	32.3	30,520	56.0	2,200	4.0	2,715	5.0	1,435	3.0	54,505	100.0
Malton	8,735	29.3	16,995	57.1	1,420	4.8	1,600	5.0	1,015	3.0	29,765	100.0
Meadowvale	22,965	29.1	47,045	59.6	2,710	3.4	4,025	5.0	2,155	3.0	78,895	100.0
Port Credit/ Lakeview	8,810	32.5	13,180	48.6	1,745	6.4	2,375	9.0	1,005	4.0	27,120	100.0
Streetsville	18,495	29.5	37,915	60.4	2,500	4.0	2,495	4.0	1,355	2.0	62,765	100.0
City of Brampton	100,125	29.9	191,665	57.3	14,150	4.2	17,840	5.3	10,715	3.2	334,495	100.0
Bramalea	33,480	29.7	64,785	57.4	4,840	4.3	6,090	5.0	3,685	3.0	112,905	100.0
Central Brampton	41,780	31.3	72,555	54.3	6,365	4.8	8,105	6.0	4,735	4.0	133,530	100.0
Gore	6,625	26.3	16,285	64.6	995	3.9	770	3.0	530	2.0	25,205	100.0
Heartlake	18,210	29.0	38,005	60.5	1,945	3.1	2,870	5.0	1,755	3.0	62,780	100.0
Town of Caledon	11,800	26.5	27,490	61.7	1,720	3.9	2,415	5.4	1,120	2.5	44,545	100.0
Bolton	6,240	25.1	15,825	63.6	925	3.7	1,255	5.0	650	3.0	24,890	100.0
Caledon (Urban)	3,485	28.1	7,455	60.1	470	3.8	715	6.0	280	2.0	12,400	100.0

 Source: Statistics Canada, Census of Canada, 2006.

Figure 11. Divorced Persons: Canada, Ontario, Peel, Peel's Municipalities and Selected Peel Neighbourhoods, 2006



Source: Statistics Canada, Census of Canada, 2006.

Table 14. Population (age 15+) by Marital Status: Peel, 2001-2006

Marital Status	2001		2006		Rate of Change 2001-2006	
	#	%	#	%	#	%
Single	230,485	29.9%	276,525	30.2%	46,040	20.0%
Married	442,895	57.4%	520,350	56.9%	77,455	17.5%
Widowed	33,805	4.4%	41,000	4.5%	7,195	21.3%
Divorced or Separated	64,485	8.4%	76,530	8.4%	12,045	18.7%
Total Population Aged 15+ Years	771,670	100.0%	914,405	100.0%	142,735	18.5%

Source: Statistics Canada, Census of Canada, 2001; 2006.

B. HIGHLIGHTS: FAMILIES IN PEEL, 2006

- Compared to Ontario and Canada as a whole, Peel had a higher proportion of married couple families (78.4% vs. 73.9% and 68.6%, respectively), a lower proportion of common-law couple families (6.3% vs. 10.3% and 15.5%, respectively) and a lower proportion of lone-parent families (15.3% vs. 15.8% and 15.9%, respectively) in 2006.
- Of the three Peel municipalities, Brampton had a larger proportion of lone-parent families (16.1%) compared to 15.2% for Mississauga and 10.7% for Caledon.
- At the neighbourhood level, Malton had the highest proportion of single parent families (19.8%), followed by Port Credit/Lakeview (17.9%), Central Brampton (17.9%), and Bramalea (16.7%).
- Caledon (urban) had the lowest proportion of single parent families (9.5%).
- Peel recorded a higher rate of growth in its single-parent families (24.2%), between 2001 and 2006 than Ontario (11.2%) and Canada as a whole (7.8%).
- Between 2001 and 2006, Peel recorded a 16.2% growth in its couple families compared to 6.5% and 6% for Ontario and Canada as a whole.
- Over the 2001-2006 period, the growth in couple families was highest in Brampton (31.9%), followed by Caledon (11.2%) and then Mississauga (8.4%).
- For the 2001 and 2006 period, the rate of growth of lone-parent families in Brampton (39.6%) was significantly higher than that for Caledon (29.1%) and Mississauga (15.2%).
- Malton, however, was the only neighbourhood in Peel to record a decline in the number of lone-parent families between 2001 and 2006 (-2.3%). Other Peel neighbourhoods with low rates of change in the number of their lone-parent families were: Cooksville/Dixie (2.7%); Clarkson/Lorne Park (3.5%) and Port Credit/Lakeview (6.5%).
- Gore, Heartlake and Caledon (Urban) were the neighbourhoods with the highest rate of growth in (couple) families for the 2001-2006 period (1,331.6%, 112.8% and 452.4%, respectively).

Table 15. Families: Canada, Ontario, Peel, Mississauga, Brampton and Caledon, 2006

Region	Total # of families in private Households		Couple families				Lone-parent Families	
			Married couples		Common-law couples			
	#	%	#	%	#	%	#	%
Canada	8,896,845	100.0	6,105,910	68.6	1,376,870	15.5	1,414,060	15.9
Ontario	3,422,320	100.0	2,530,560	73.9	351,045	10.3	540,715	15.8
Peel	324,115	100.0	254,125	78.4	20,395	6.3	49,600	15.3
City of Mississauga	186,630	100.0	147,190	78.9	11,060	5.9	28,385	15.2
City of Brampton	120,865	100.0	93,300	77.2	8,125	6.7	19,440	16.1
Town of Caledon	16,615	100.0	13,630	82.0	1,205	7.3	1,775	10.7

Source: Statistics Canada, Census of Canada, 2006.

Table 16. Rate of Growth in Couple Families: Peel, 2001 & 2006

Region & Neighbourhoods	Couple Families		Couple Families		Rate of Growth (Couples)	
	2001		2006		2001-2006	
	#	%	#	%	#	%
Canada	7,059,830	84.1	7,482,780	84.1	422,950	6.0
Ontario	2,704,885	84.8	2,881,605	84.2	176,720	6.5
Peel	236,140	85.5	274,510	84.7	38,370	16.2
City of Mississauga	145,920	85.5	158,250	84.8	12,330	8.4
Clarkson/Lorne Park	11,345	85.9	11,230	85.3	-115	-1.0
Cooksville/Dixie	37,160	83.9	37,915	83.8	755	2.0
Creditview	8,795	88.2	11,225	86.8	2,430	27.6
Erin Mills/Erindale	22,430	85.3	21,660	83.8	-770	-3.4
Hurontario	14,655	85.5	15,760	83.4	1,105	7.5
Malton	9,250	81.1	8,580	80.2	-670	-7.2
Meadowvale	20,695	88.2	24,930	86.7	4,235	20.5
Port Credit/ Lakeview	7,830	83.5	7,530	81.9	-300	-3.8
Streetsville	13,770	89.2	19,365	88.6	5,595	40.6
City of Brampton	76,890	84.6	101,425	83.9	24,535	31.9
Bramalea	30,685	84.7	34,135	83.3	3,450	11.2
Central Brampton	36,040	83.5	38,965	82.1	2,925	8.1
Gore	570	94.2	8,160	89.9	7,590	1331.6
Heartlake	9,480	88.4	20,175	86.4	10,695	112.8
Town of Caledon	13,335	90.6	14,835	89.3	1,500	11.2
Bolton	6,710	90.5	8,450	88.4	1,740	25.9
Caledon (Urban)	735	92.5	4,060	90.4	3,325	452.4

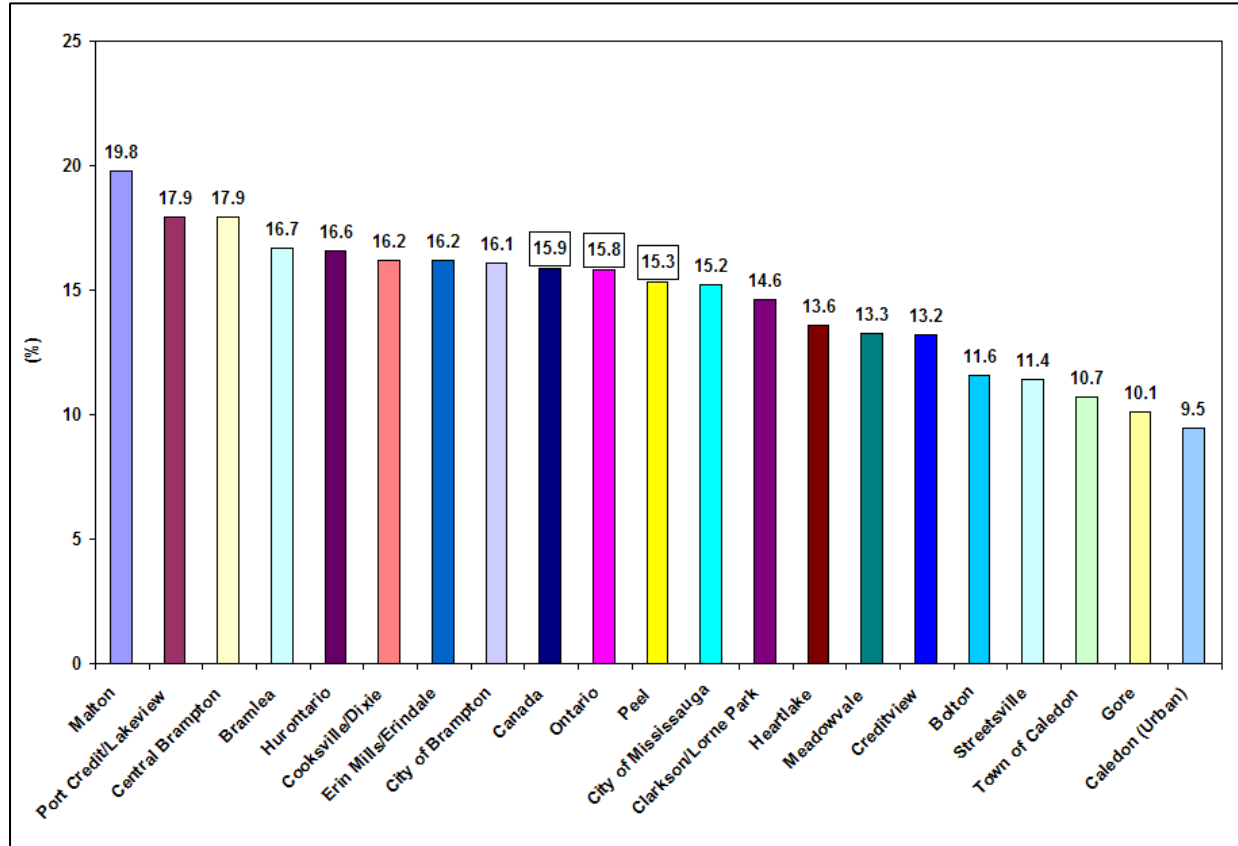
Source: Statistics Canada, Census of Canada, 2001; 2006.

Table 17. Rate of Growth in Lone-Parent Families: Peel, 2001 & 2006

Region & Neighbourhoods	Lone-Parent Families 2001		Lone-Parent Families 2006		Rate of Growth (Lone-Parent)	
					2001-2006	
	#	%	#	%	#	%
Canada	1,311,190	15.7	1,414,050	15.9	102,860	7.8
Ontario	486,105	15.2	540,715	15.8	54,610	11.2
Peel	39,945	14.5	49,600	15.3	9,655	24.2
City of Mississauga	24,645	14.4	28,385	15.2	3,740	15.2
Clarkson/Lorne Park	1,860	14.1	1,925	14.6	65	3.5
Cooksville/Dixie	7,145	16.1	7,335	16.2	190	2.7
Creditview	1,170	11.7	1,710	13.2	540	46.2
Erin Mills/Erindale	3,860	14.7	4,185	16.2	325	8.4
Hurontario	2,455	14.3	3,130	16.6	675	27.5
Malton	2,165	19.0	2,115	19.8	-50	-2.3
Meadowvale	2,785	11.9	3,820	13.3	1,035	37.2
Port Credit/ Lakeview	1,550	16.5	1,650	17.9	100	6.5
Streetsville	1,670	10.8	2,495	11.4	825	49.4
City of Brampton	13,925	15.3	19,440	16.1	5,515	39.6
Bramalea	5,560	15.3	6,835	16.7	1,275	22.9
Central Brampton	7,095	16.4	8,515	17.9	1,420	20.0
Gore	35	5.8	920	10.1	885	2528.6
Heartlake	1,235	11.5	3,170	13.6	1,935	156.7
Town of Caledon	1,375	9.3	1,775	10.7	400	29.1
Bolton	705	9.5	1,105	11.6	400	56.7
Caledon (Urban)	60	7.5	425	9.5	365	608.3

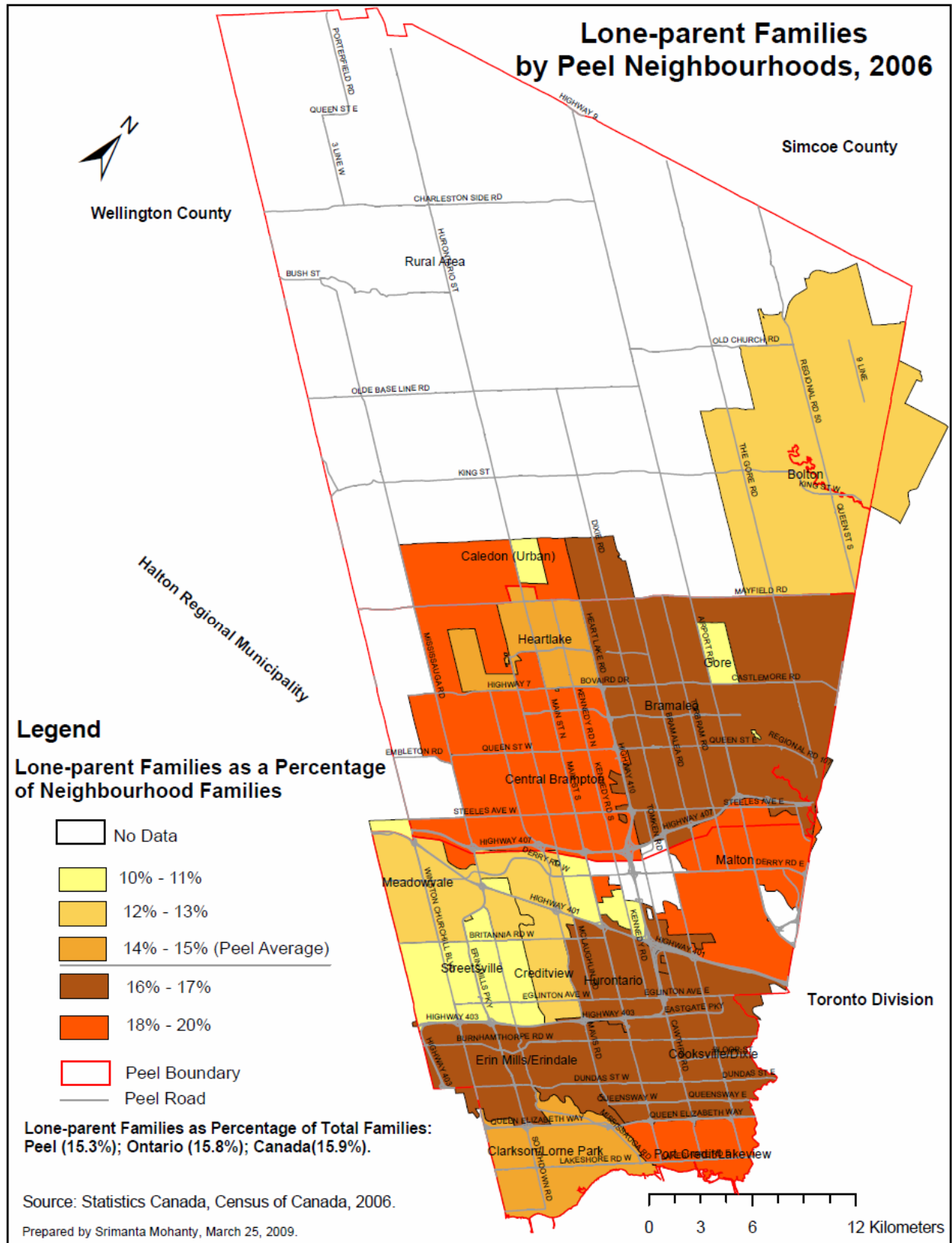
Source: Statistics Canada, *Census of Canada*, 2001; 2006.

Figure 12. Lone Parent Families: Canada, Ontario, Peel, Peel's Municipalities and Neighbourhoods, 2006



Source: Statistics Canada, Census of Canada, 2006.

Figure 13



C. HIGHLIGHTS: PEOPLE LIVING ALONE IN PEEL, 2006

- In 2006, Peel had a lower percentage of people (age 15+) who lived alone compared to Ontario and Canada (4.6% vs. 9.2% & 10.7%, respectively).
- In 2006, Peel had a lower percentage of seniors who lived alone compared to Ontario, and Canada (15.7% vs. 25.7% & 28.1%, respectively).
- Caledon had a higher rate of growth among seniors living alone over the 2001-2006 period (25.6%) than Brampton (22.8%) and Mississauga (23%).
- In 2006, the neighbourhood with the highest percentage of people living alone was Port Credit/Lakeview (12%).
- The neighbourhoods with the highest percentage of seniors living alone were: Port Credit/Lakeview (27.4%), Cooksville/Dixie (20.8%), and Clarkson/Lorne Park (19.6%).
- The rate of growth among individuals living alone in Peel was higher (19.8%) than Ontario's (11.6%) and Canada's (11.8%) for the 2001 and 2006 period.
- Between 2001 and 2006, the number of seniors living alone in Peel grew significantly by 23.1%, compared to 8.5% in Canada and 6.9% in Ontario.
- For the 2001-2006 period, the rate of growth among individuals living alone was highest in Brampton (27.6%), followed by Caledon (24.1%), and Mississauga (16.4%).
- Neighbourhoods with the lowest rate of growth between 2001 and 2006 in their living alone population group were: Clarkson/Lorne Park (6.6%), Erin Mills/Erindale (10.7%), Port Credit/Lakeview (11%) and Hurontario (11.7%).
- The two neighbourhoods with the highest growth rates in seniors living alone between 2001 and 2006 were also in Mississauga: Crediview (110%) and Streetsville (96%).

Table 18.
Population Living Alone: Canada, Ontario, Peel, Mississauga, Brampton and Caledon 2006

Region	All Persons Living Alone		Seniors Living Alone	
	#	% of Total number of persons in private households	#	% of Senior's Pop.
Canada	3,327,045	10.7	1,128,665	28.1
Ontario	1,104,865	9.2	395,220	25.7
Peel	52,560	4.6	15,520	15.7
City of Mississauga	35,070	5.3	10,480	16.8
City of Brampton	15,425	3.6	4,305	13.5
Town of Caledon	2,060	3.6	735	14.8

Source: Statistics Canada, Census of Canada, 2006.

Table 19. Rate of Growth of Individuals Living Alone: Peel, 2001 & 2006

Region & Neighbourhoods	Individuals Living Alone, 2001		Individuals Living Alone, 2006		Rate of Growth	
	#	%	#	%	2001-2006	
					#	%
Canada	2,976,875	10.1	3,327,045	10.7	350,170	11.8
Ontario	990,160	8.8	1,104,865	9.2	114,705	11.6
Peel	43,875	4.5	52,555	4.6	8,680	19.8
City of Mississauga	30,125	4.9	35,070	5.3	4,945	16.4
Clarkson/Lorne Park	2,885	6.3	3,075	6.7	190	6.6
Cooksville/Dixie	11,240	7.1	12,885	8.1	1,645	14.6
Creditview	670	1.8	795	1.7	125	18.7
Erin Mills/Erindale	3,565	3.8	3,945	4.3	380	10.7
Hurontario	2,570	4.1	2,870	4.3	300	11.7
Malton	1,020	2.5	1,395	3.7	375	36.8
Meadowvale	3,075	3.7	3,575	3.5	500	16.3
Port Credit/ Lakeview	3,445	10.6	3,825	12.0	380	11.0
Streetsville	1,665	3.0	2,680	3.3	1,015	61.0
City of Brampton	12,085	3.7	15,425	3.6	3,340	27.6
Bramalea	4,065	3.2	4,885	3.4	820	20.2
Central Brampton	7,375	4.8	8,475	5.0	1,100	14.9
Gore	N/A	N/A	445	1.3	N/A	N/A
Heartlake	615	1.6	1,620	1.9	1,005	163.4
Town of Caledon	1,660	3.3	2,060	3.6	400	24.1
Bolton	765	3.0	1,030	3.1	265	34.6
Caledon (Urban)	25	0.9	580	3.9	555	2,220.0

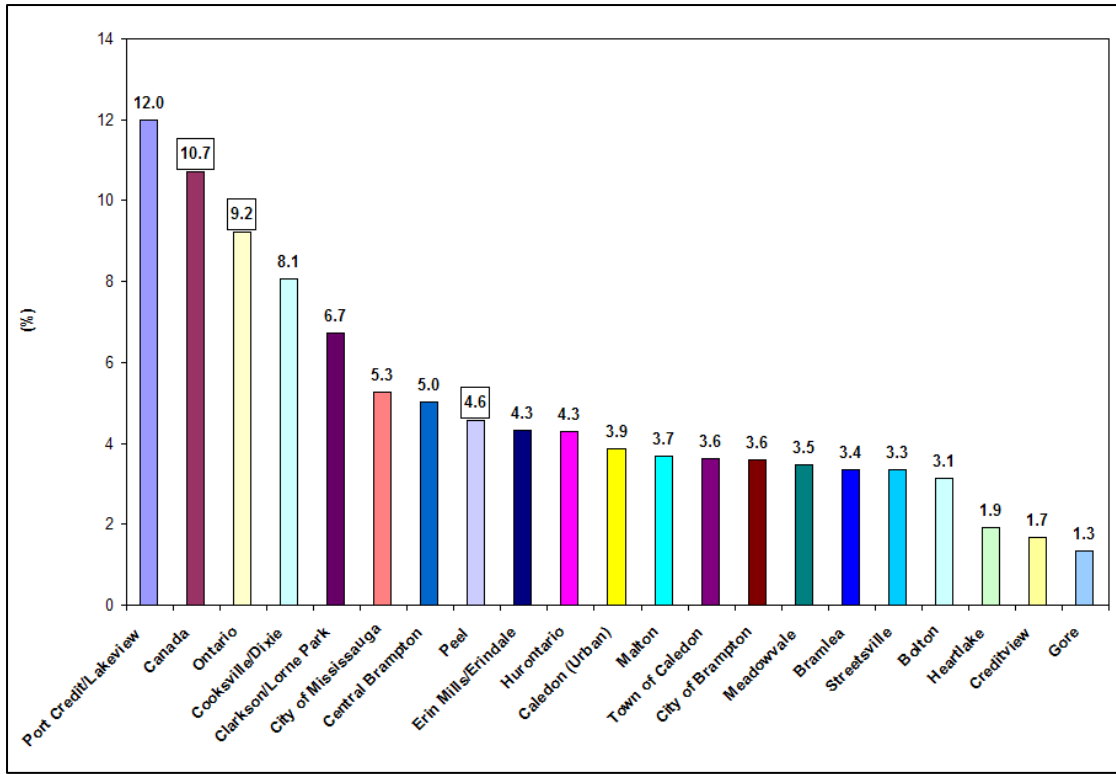
 Source: Statistics Canada, *Census of Canada*, 2001; 2006.

Table 20. Rate of Growth of Seniors Living Alone: Peel, 2001 & 2006

Region & Neighbourhoods	Seniors Living Alone, 2001		Seniors Living Alone, 2006		Rate of Growth (Seniors)	
					2001-2006	
	#	%	#	%	#	%
Canada	1,040,020	28.9	1,128,655	28.1	88,635	8.5
Ontario	369,550	26.8	395,220	25.7	25,670	6.9
Peel	12,610	16.6	15,520	15.7	2,910	23.1
City of Mississauga	8,520	16.9	10,480	16.8	1,960	23.0
Clarkson/Lorne Park	990	19.1	1,110	19.6	120	12.1
Cooksville/Dixie	3,420	20.2	4,075	20.8	655	19.2
Creditview	50	2.8	105	3.6	55	110.0
Erin Mills/Erindale	1,095	15.0	1,350	15.1	255	23.3
Hurontario	405	10.0	515	9.7	110	27.2
Malton	340	10.0	465	12.3	125	36.8
Meadowvale	710	18.8	840	14.9	130	18.3
Port Credit/ Lakeview	1,140	25.2	1,285	27.4	145	12.7
Streetsville	375	11.0	735	13.0	360	96.0
City of Brampton	3,505	16.0	4,305	13.5	800	22.8
Bramalea	985	11.5	1,295	11.2	310	31.5
Central Brampton	2,430	20.4	2,775	19.3	345	14.2
Gore	N/A	N/A	130	6.0	N/A	N/A
Heartlake	75	5.5	95	2.5	20	26.7
Town of Caledon	585	15.2	735	14.8	150	25.6
Bolton	305	19.4	395	16.0	90	29.5
Caledon (Urban)	N/A	N/A	200	12.2	N/A	N/A

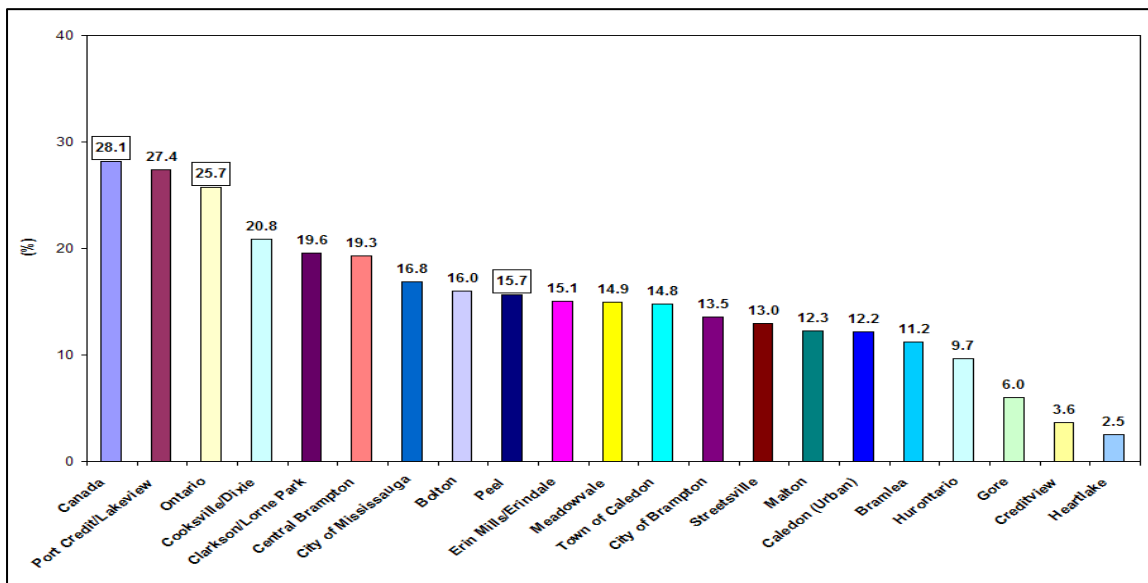
 Source: Statistics Canada, Census of Canada, 2001; 2006.

**Figure 14. Individuals Living Alone:
Canada, Ontario, Peel, Peel’s Municipalities and Selected Peel Neighbourhoods, 2006**



Source: Statistics Canada, Census of Canada, 2006.

**Figure 15. Seniors Living Alone:
Canada, Ontario, Peel, Peel’s Municipalities and Selected Peel Neighbourhoods, 2006**



Source: Statistics Canada, Census of Canada, 2006.

D. HIGHLIGHTS: HOME OWNERSHIP IN PEEL, 2006

- In 2006, Peel had a higher incidence of home ownership than Ontario and Canada (78.1% vs. 71% and 68.4%, respectively).
- Between 2001 and 2006, Peel had a higher rate of growth in home ownership (22.1%) than Ontario (13%) and Canada as a whole (11.8%).
- Of the three municipalities in Peel, Caledon reported the highest rate of home ownership in 2006 (91.4%), followed by Brampton with 81.5% and Mississauga with 75%.
- Over the 2001/2006 period, Brampton had a higher rate of growth in home ownership (36.6%) than Mississauga (15%) and Caledon (14.9%).
- At the neighbourhood level, Gore reported the highest rate of home ownership (95%) followed by Heartlake (94.1%) and Bolton (92.2%). These are also the same neighbourhoods with the highest rate of growth of home ownership between 2001 and 2006 (1233.6%, 115% and 470.1%, respectively).
- The neighbourhoods with the lowest rate of growth in home ownership were located in Mississauga: Malton (1.7%); Clarkson/Lorne Park (2.5%); and Erin Mills/Erindale (3.1%).
- Negative growth among home renters was recorded for Canada (-0.7%), Ontario (-2.9%), and Peel (-0.7%) between 2001 and 2006. (“Negative growth” means “decline.”)
- The City of Brampton was the only Peel municipality that recorded growth among home renters (3.9%) between 2001 and 2006. For the same period, both Caledon and Mississauga experienced negative growth rates in their home renters population (-3.7% and -2.4% respectively).
- In 2006, the neighbourhoods with the highest rates of home renters were: Cooksville/Dixie (39%) Port Credit/Lakeview (34%) and Malton (32.4%). The number of home renters in these same neighbourhoods, however, declined over the 2001 and 2006 by -2.8%, -4.9% and -7.5%, respectively.
- Erin Mills/Erindale had the largest negative growth rate or decline (-11.5%) in home renters for the same period.

Table 21. Home Ownership of Occupied Private Dwellings in Peel, 2006

REGION	Owned Dwellings		Rented Dwellings		Band Housing		Total # of Occupied Dwellings
	#	%	#	%	#	%	
Canada	8,509,780	68.4	3,878,505	31.2	49,180	0.4	12,437,465
Ontario	3,235,495	71.0	1,312,295	28.8	7,235	0.2	4,555,025
Peel	280,465	78.1	78,595	21.9	-	-	359,060
City of Mississauga	161,190	75.0	53,730	25.0	-	-	214,920
City of Brampton	102,625	81.5	23,305	18.5	-	-	125,930
Town of Caledon	16,650	91.4	1,565	8.6	-	-	18,215

Source: Statistics Canada, Census of Canada, 2006.

Table 22. Rate of Growth in Home Ownership: Peel, 2001 & 2006

Region & Neighbourhoods	Owned		Owned		Rate of Growth (Owned)	
	2001		2006		2001-2006	
	#	%	#	%	#	%
Canada	7,610,385	65.8	8,509,780	68.4	899,395	11.8
Ontario	2,862,296	67.8	3,235,495	71.0	373,199	13.0
Peel	229,730	74.4	280,465	78.1	50,735	22.1
City of Mississauga	140,125	71.8	161,190	75.0	21,065	15.0
Clarkson/Lorne Park	12,305	76.7	12,610	77.8	305	2.5
Cooksville/Dixie	31,685	57.7	35,240	60.9	3,555	11.2
Creditview	8,455	85.2	10,960	87.7	2,505	29.6
Erin Mills/Erindale	21,895	75.3	22,575	78.1	680	3.1
Hurontario	14,565	77.3	16,210	78.6	1,645	11.3
Malton	7,220	65.5	7,340	67.6	120	1.7
Meadowvale	21,695	83.0	26,720	85.6	5,025	23.2
Port Credit/ Lakeview	8,200	63.5	8,700	66.0	500	6.1
Streetsville	14,100	86.3	20,795	88.4	6,695	47.5
City of Brampton	75,120	77.0	102,625	81.5	27,505	36.6
Bramalea	30,280	79.5	34,350	81.8	4,070	13.4
Central Brampton	34,030	71.1	38,755	73.8	4,725	13.9
Gore	565	98.3	7,535	94.4	6,970	1233.6
Heartlake	10,160	93.6	21,900	94.1	11,740	115.6
Town of Caledon	14,490	89.9	16,650	91.4	2,160	14.9
Bolton	7,385	91.2	9,545	92.4	2,160	29.2
Caledon (Urban)	770	98.1	4,390	89.3	3,620	470.1

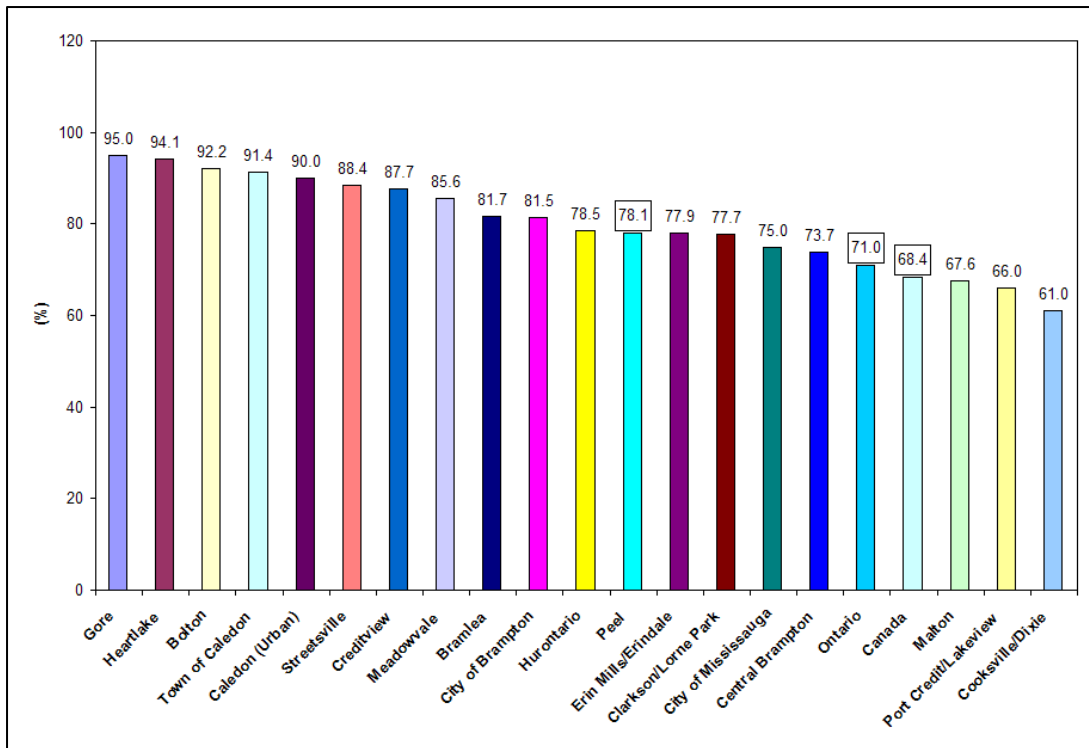
Source: Statistics Canada, Census of Canada, 2001; 2006.

Table 23. Rate of Growth in Home Renters: Peel, 2001 & 2006

Region & Neighbourhoods	Rented		Rented		Rate of Growth (Rented)	
	2001		2006		2001-2006	
	#	%	#	%	#	%
Canada	3,907,170	33.8	3,878,500	31.2	-28,670	-0.7
Ontario	1,351,365	32.0	1,312,295	28.8	-39,070	-2.9
Peel	79,115	25.6	78,600	21.8	-515	-0.7
City of Mississauga	55,055	28.2	53,730	25.0	-1,325	-2.4
Clarkson/Lorne Park	3,740	23.3	3,605	22.2	-135	-3.6
Cooksville/Dixie	23,215	42.3	22,570	39.1	-645	-2.8
Creditview	1,470	14.8	1,530	12.2	60	4.1
Erin Mills/Erindale	7,200	24.7	6,375	22.1	-825	-11.5
Hurontario	4,280	22.7	4,425	21.4	145	3.4
Malton	3,800	34.5	3,515	32.4	-285	-7.5
Meadowvale	4,450	17.0	4,485	14.4	35	0.8
Port Credit/ Lakeview	4,715	36.5	4,485	34.0	-230	-4.9
Streetsville	2,235	13.7	2,730	11.6	495	22.1
City of Brampton	22,435	23.0	23,305	18.5	870	3.9
Bramalea	7,800	20.5	7,705	18.3	-95	-1.2
Central Brampton	13,865	28.9	13,825	26.3	-40	-0.3
Gore	10	1.7	395	4.9	385	3,850.0
Heartlake	700	6.4	1,370	5.9	670	95.7
Town of Caledon	1,625	10.1	1,565	8.6	-60	-3.7
Bolton	710	8.8	805	7.8	95	13.4
Caledon (Urban)	15	1.9	490	10.0	475	3,166.7

Source: Statistics Canada, Census of Canada, 2001; 2006.

Figure 16. Home Owners: Canada, Ontario, Peel, Peel's Municipalities, Selected Peel Neighbourhoods, 2006



Source: Statistics Canada, Census of Canada, 2006.

III. Socio-economic Characteristics

A. HIGHLIGHTS: EDUCATION IN PEEL, 2006

- Compared to Canada and Ontario as a whole, Peel had a lower proportion of people with no certificate, diploma or degree education (23.8%, 22.2% vs. 19.9%, respectively).
- The percentage of Peel population ages 15 and over with a high school certificate level of education (27.3%) was slightly higher than that for Ontario (26.8%) and Canada (25.5%).
- Compared to Canada and Ontario, Peel had a lower percentage of its population with trades certificate or diploma (10.9%, 8% vs. 7%, respectively).
- Compared to Canada and Ontario as a whole, Peel had a higher proportion of university–educated people within its population (18.1%, 20.5% vs. 22.8%, respectively).
- Of the three municipalities in Peel, Brampton had the highest percentage of persons with no certificate, diploma or degree education (22.6%) compared to Mississauga with 18.3% and Caledon with 19.4%.
- Mississauga had the highest percentage of persons with a university certificate or degree or higher level of education (26.8%) compared to Caledon with 17.2% and Brampton with 17.2%.
- At the neighbourhood level, Streetsville had the highest proportion of university graduates within its population (33.3%), followed by Creditview with 29.1%, and Clarkson/Lorne Park with 28.9%.

Table 24.
Population (age 15+) by Educational Attainment: Canada, Ontario and Peel, 2006

Educational Attainment	Canada		Ontario		Peel	
	#	%	#	%	#	%
Total population 15 and Over by highest certificate, diploma or degree - 20% sample data	25,664,220	100.0%	9,819,420	100.0%	909,145	100.0%
<i>No certificate, diploma or degree</i>	<i>6,098,330</i>	<i>23.8%</i>	<i>2,183,630</i>	<i>22.2%</i>	<i>180,860</i>	<i>19.9%</i>
<i>Certificate, diploma or degree</i>	<i>19,565,895</i>	<i>76.2%</i>	<i>7,635,790</i>	<i>77.8%</i>	<i>728,275</i>	<i>80.1%</i>
High school certificate or equivalent	6,553,420	25.5%	2,628,570	26.8%	247,840	27.3%
Apprenticeship or trades certificate or Diploma	2,785,420	10.9%	785,110	8.0%	63,610	7.0%
College, CEGEP or other non-university Certificate or diploma	4,435,125	17.3%	1,804,775	18.4%	155,785	17.1%
University certificate, diploma or degree	5,791,920	22.6%	2,417,325	24.6%	261,035	28.7%
University certificate or diploma below bachelor level	1,136,150	4.4%	405,275	4.1%	53,560	5.9%
University certificate or degree	4,655,770	18.1%	2,012,055	20.5%	207,470	22.8%
Bachelor's degree	2,981,465	11.6%	1,243,725	12.7%	131,320	14.4%
University certificate or diploma above Bachelor level	493,540	1.9%	245,145	2.5%	25,565	2.8%
Degree in medicine, dentistry, veterinary medicine or optometry	136,845	0.5%	57,685	0.6%	5,150	0.6%
Master's degree	866,975	3.4%	391,695	4.0%	41,040	4.5%
Earned doctorate	176,950	0.7%	73,785	0.8%	4,395	0.5%

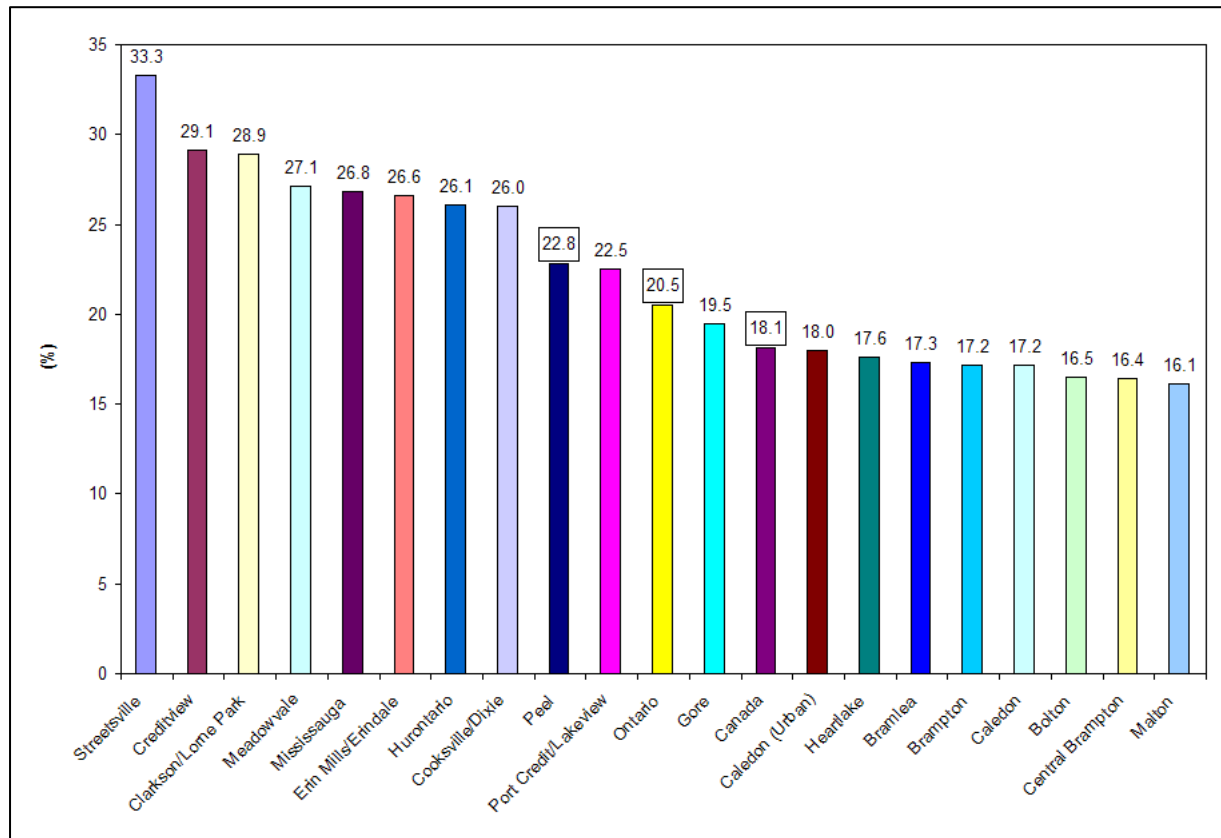
Source: Statistics Canada, Census of Canada, 2006.

Table 25.
Population (Age 15+) by Educational Attainment: Mississauga, Brampton, Caledon, 2006

Educational Attainment	Mississauga		Brampton		Caledon	
	#	%	#	%	#	%
Total population 15 and Over by highest certificate, diploma or degree - 20% sample data	532,560	100.0%	332,235	100.0%	44,345	100.0%
No certificate, diploma or degree	97,335	18.3%	74,940	22.6%	8,595	19.4%
Certificate, diploma or degree	435,220	81.7%	257,300	77.4%	35,750	80.6%
High school certificate or equivalent	136,670	25.7%	98,470	29.6%	12,695	28.6%
Apprenticeship or trades certificate or Diploma	34,090	6.4%	25,495	7.7%	4,010	9.0%
College, CEGEP or other non-university Certificate or diploma	88,275	16.6%	57,730	17.4%	9,785	22.1%
University certificate, diploma or degree	176,175	33.1%	75,590	22.8%	9,265	20.9%
University certificate or diploma below bachelor level	33,430	6.3%	18,515	5.6%	1,620	3.7%
University certificate or degree	142,740	26.8%	57,075	17.2%	7,645	17.2%
Bachelor's degree	90,060	16.9%	35,990	10.8%	5,270	11.9%
University certificate or diploma above Bachelor level	16,805	3.2%	7,700	2.3%	1,060	2.4%
Degree in medicine, dentistry, veterinary medicine or optometry	3,840	0.7%	1,160	0.3%	150	0.3%
Master's degree	28,555	5.4%	11,475	3.5%	1,020	2.3%
Earned doctorate	3,485	0.7%	760	0.2%	150	0.3%

Source: Statistics Canada, Census of Canada, 2006.

Figure 17.
Population Aged 15+ with University Certificate or Degree Education: Canada, Ontario, Peel, Peel's Municipalities and Selected Peel Neighbourhoods, 2006



Source: Statistics Canada, Census of Canada, 2006.

B. HIGHLIGHTS: EMPLOYMENT IN PEEL, 2006

- In 2006, Peel had a higher percentage of its age 15+ population in the labour force, compared to Ontario, and Canada (71.6% vs. 67.1% and 66.8%, respectively).
- The 6.4% unemployment rate for Peel in 2006 was the same as Ontario's, and was only slightly less than the 6.6% for Canada as a whole.
- Among the three municipalities, the highest unemployment rate in 2006 was in Brampton (6.6%), while the lowest was in Caledon (4.1%).
- In 2006, the three neighbourhoods with the lowest labour force participation rates were: Malton (67.1%), Cooksville/Dixie (67.3%), and Port Credit/Lakeview (68.2%).
- The growth in the labor force participation rate of the Peel population (15.4%) between 2001 and 2006, is almost double that of Canada (8%) and Ontario (8.2%).
- Peel's unemployment rate grew by a significant 45.3% between 2001 and 2006, compared to a 13.5% growth for Ontario and a -4.4% decline for Canada as a whole.
- Brampton recorded the highest growth in unemployment rates between 2001 and 2006, 68.8%, which is almost double that of Caledon (38.8%) and Mississauga (33.6%).
- Both Brampton and Caledon recorded strong growth in their labour force participation rate for the 2001-2006 period (29.4% and 11.2%) compared to a decline of -3.2% for Mississauga.
- The neighbourhoods that recorded negative growth in their labour force participation rates between 2001 and 2006, were also located in Mississauga: Malton (-9.3%), Erin Mills/Erindale (-4.3%), Port Credit/Lakeview (-1.8%), and Clarkson/Lorne Park (-0.6%).
- At the neighbourhood level, Malton had the highest unemployment rate (8.1%), while Caledon (Urban) had the lowest rate (4.3%).
- Between 2001 and 2006, Clarkson/Lorne Park had the lowest unemployment growth rate (4.1%).

Table 26. Labour Force Activity Aged 15 Years and Over: Canada, Ontario, Peel, Mississauga, Brampton and Caledon, 2006

	Canada	Ontario	Peel	Mississauga	Brampton	Caledon
Total population 15 years and over by labour force activity - 20% sample data	25,664,220	9,819,420	909,140	532,560	332,235	44,350
Not in the labour force	8,518,090	3,231,840	257,945	155,485	91,250	11,210
In the labour force	17,146,135	6,587,580	651,200	377,075	240,985	33,135
Employed	16,021,180	6,164,245	609,265	352,410	225,080	31,775
Unemployed	1,124,955	423,330	41,935	24,665	15,905	1,360
<i>Participation rate (%)</i>	<i>66.8</i>	<i>67.1</i>	<i>71.6</i>	<i>70.8</i>	<i>72.5</i>	<i>74.7</i>
<i>Employment rate (%)</i>	<i>62.4</i>	<i>62.8</i>	<i>67</i>	<i>66.2</i>	<i>67.7</i>	<i>71.6</i>
<i>Unemployment rate (%)</i>	<i>6.6</i>	<i>6.4</i>	<i>6.4</i>	<i>6.5</i>	<i>6.6</i>	<i>4.1</i>

Source: Statistics Canada, Census of Canada, 2006.

Table 27. Rate of Change in Labour Participation Rate: Peel, 2001 & 2006

Region & Neighbourhoods	Labour Force Participation Rate		Labour Force Participation Rate		Rate of Change (Participation Rate)	
	2001		2006		2001-2006	
	#	%	#	%	#	%
Canada	15,872,075	66.4	17,146,135	66.8	1,274,060	8.0
Ontario	6,086,815	67.3	6,587,580	67.1	500,765	8.2
Peel	564,195	73.5	651,200	71.6	87,005	15.4
City of Mississauga	348,145	72.6	337,075	70.8	-11,070	-3.2
Clarkson/Lorne Park	26,395	71.5	26,235	70.3	-160	-0.6
Cooksville/Dixie	89,055	69.4	89,360	67.3	305	0.3
Creditview	20,140	74.2	26,080	72.1	5,940	29.5
Erin Mills/Erindale	54,810	73.3	52,430	70.5	-2,380	-4.3
Hurontario	36,485	74.4	38,590	71.0	2,105	5.8
Malton	21,850	69.3	19,825	67.1	-2,025	-9.3
Meadowvale	49,365	79.0	60,630	77.1	11,265	22.8
Port Credit/Lakeview	18,795	70.1	18,460	68.2	-335	-1.8
Streetsville	31,295	73.2	45,390	72.9	14,095	45.0
City of Brampton	186,250	74.8	240,985	72.5	54,735	29.4
Bramalea	74,380	75.2	80,380	71.5	6,000	8.1
Central Brampton	86,990	73.2	94,745	71.6	7,755	8.9
Gore	1,190	75.3	18,030	72.5	16,840	1415.1
Heartlake	23,395	80.1	47,825	76.5	24,430	104.4
Town of Caledon	29,800	76.9	33,135	74.7	3,335	11.2
Bolton	15,040	78.4	18,890	76.1	3,850	25.6
Caledon (Urban)	1,580	76.9	9,110	73.2	7,530	476.6

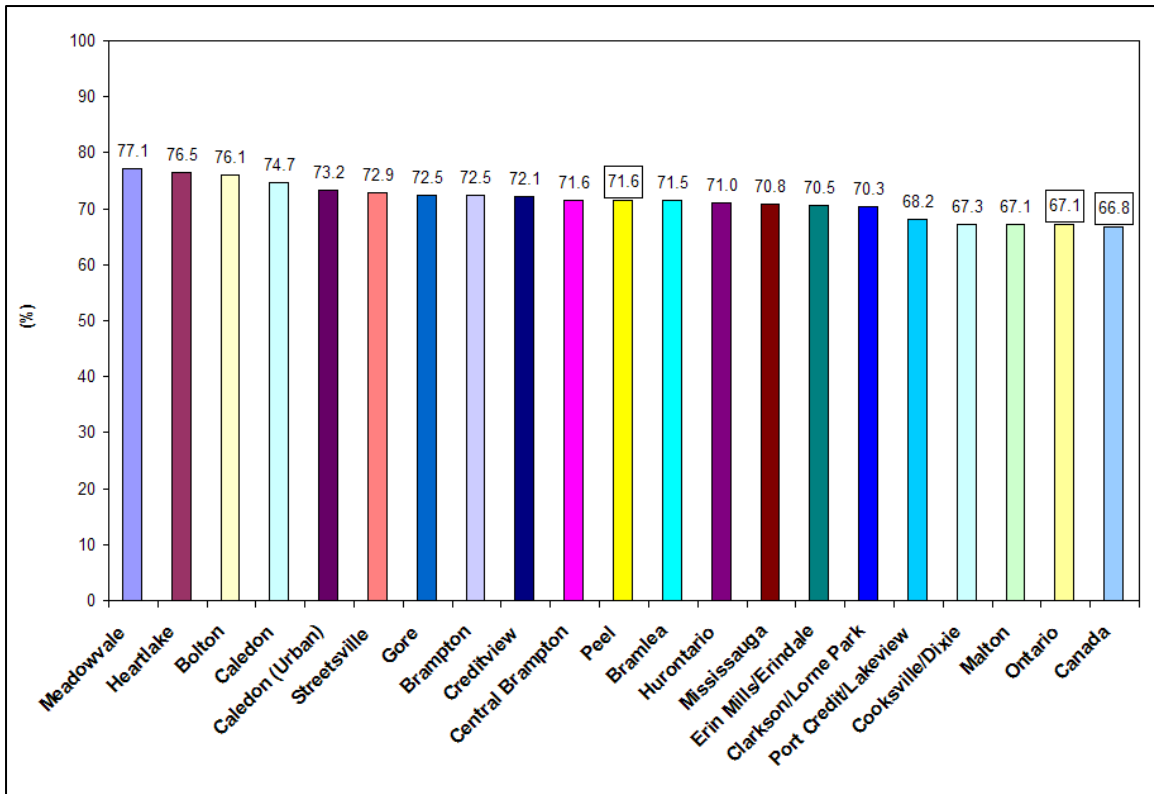
Source: Statistics Canada, Census of Canada, 2001; 2006.

Table 28. Rate of Change in Employment Rate: Peel, 2001 & 2006

Region & Neighbourhoods	Unemployment Rate, 2001		Unemployment Rate, 2006		Rate of Change (Unemployment Rate)	
					2001-2006	
	#	%	#	%	#	%
Canada	1,176,935	7.4	1,124,955	6.6	-51,980	-4.4
Ontario	372,915	6.1	423,335	6.4	50,420	13.5
Peel	28,865	5.1	41,930	6.4	13,065	45.3
City of Mississauga	18,460	5.3	24,670	6.5	6,210	33.6
Clarkson/Lorne Park	1,355	5.1	1,410	5.4	55	4.1
Cooksville/Dixie	5,190	5.8	6,715	7.5	1,525	29.4
Creditview	940	4.7	1,820	7.0	880	93.6
Erin Mills/Erindale	2,955	5.4	3,560	6.8	605	20.5
Hurontario	2,025	5.6	2,520	6.5	495	24.4
Malton	1,430	6.5	1,605	8.1	175	12.2
Meadowvale	2,175	4.4	3,315	5.5	1,140	52.4
Port Credit/ Lakeview	845	4.5	1,030	5.6	185	21.9
Streetsville	1,555	5.0	2,680	5.9	1,125	72.3
City of Brampton	9,425	5.1	15,905	6.6	6,480	68.8
Bramalea	3,695	5.0	5,415	6.7	1,720	46.5
Central Brampton	4,610	5.3	6,585	7.0	1,975	42.8
Gore	25	2.1	1,180	6.5	1,155	4620.0
Heartlake	1,090	4.7	2,710	5.7	1,620	148.6
Town of Caledon	980	3.3	1,360	4.1	380	38.8
Bolton	470	3.1	720	3.8	250	53.2
Caledon (Urban)	20	1.3	390	4.3	370	1850.0

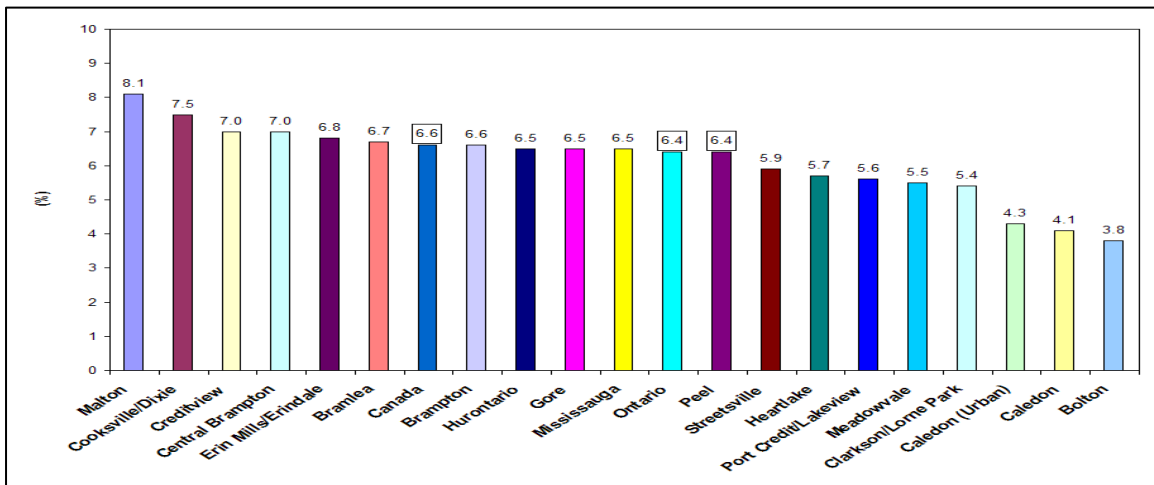
Source: Statistics Canada, Census of Canada, 2001; 2006.

Figure 18. Population Aged 15 Years and Over by Labour Force Participation Rate: Canada, Ontario, Peel, Peel’s Municipalities and Selected Peel Neighbourhoods, 2006



Source: Statistics Canada, Census of Canada, 2006.

Figure 19. Population Aged 15 Years and Over by Unemployment Rate (%): Canada, Ontario, Peel, Peel’s Municipalities and Selected Peel Neighbourhoods, 2006



Source: Statistics Canada, Census of Canada, 2006

C. HIGHLIGHTS: INCOME AND POVERTY IN PEEL, 2005

Income

- In 2005, the average family income in Peel was higher than that in Ontario and Canada (\$94,302 vs. \$90,526 & \$82,325, respectively).
- Among the three municipalities in 2005, Caledon had the highest average family income \$120,110, followed by Mississauga at \$95,868 and Brampton at \$87,992.
- The three neighbourhoods with the highest average family income were: Clarkson/Lorne Park with \$140,808, Caledon (Urban) with \$122,709 and Bolton with \$117,211.
- The neighbourhoods with the highest rate of growth in average family income were: Malton (29.2%); Port Credit/Lakeview (26.9%); Bolton (25.5%) and Caledon (Urban) (25.4%).
- The three neighbourhoods with the lowest average family incomes were: Malton (\$65,507); Cooksville/Dixie (\$76,575) and Central Brampton (\$82,567) in 2005.
- The growth of the average family income in Peel between 2001 and 2006 - 18.9% - was less than the 24.4% and 22.6% growth rate in Canada and Ontario, respectively.
- Between 2000 and 2005, the average family income grew faster in Caledon (22.2%) than in Brampton (18.5%) and Mississauga (17.3%).
- The neighbourhoods for which average family income grew the slowest between 2000 and 2005, were: Heartlake (8.1%); Gore (10.6%); Cooksville/Dixie (10.6%). Of the three, Cooksville/Dixie is the only neighbourhood with an average family income less than \$90,000 in 2005.

Poverty

- Peel has a higher percentage of individuals and families living on low income compared to Ontario and Canada. In 2005, about 13% of the Peel population lived on low incomes/below the poverty line, compared to 11.7 % in Ontario and 11.6% in Canada.
- Between 2000 and 2005, the percentage of families living on low incomes declined by 1.2% for Canada as a whole, remained at the 2000 level (11.7%) in Ontario, but increased by 2.6% in Peel.
- Among the three Peel municipalities, Mississauga had the highest percentage of low-income families, 14.2%, followed by Brampton with 12.5%, and Caledon with 3.6%.
- Between 2000 and 2005, the percentage of low-income families in Mississauga and Brampton grew by about 3% (2.9% and 2.6% respectively), while Caledon had a small decline of -0.2%.
- The neighbourhoods with the three highest percentages of families living on low incomes were: Malton (21%); Cooksville/Dixie (18.7%) and Hurontario (15%) in 2005.

Table 29.
Family Income: Canada, Ontario, Peel, Mississauga, Brampton and Caledon, 2005

REGION	Median family income \$	Average family income \$
Canada	66,343	82,325
Ontario	72,734	90,526
Peel	78,985	94,302
City of Mississauga	79,065	95,868
City of Brampton	76,704	87,992
Town of Caledon	95,246	120,110

Source: Statistics Canada, Census of Canada, 2006

Table 30. Incidence of Low Income: Canada, Ontario, Peel, Mississauga, Brampton and Caledon, 2005

	Canada	Ontario	Peel	Mississauga	Brampton	Caledon
Total economic families – 20% sample data	8,680,270	3,335,250	302,285	177,100	109,225	15,960
Prevalence of low income before tax in 2005 %	11.6	11.7	13	14.2	12.5	3.6
Prevalence of low income after tax in 2005 %	8.4	8.6	9.7	10.7	9.2	3
Total persons in private households - 20% sample data	30,628,935	11,926,145	1,151,445	663,830	430,810	56,800
Prevalence of low income before tax in 2005 %	15.3	14.7	14.5	15.7	13.9	4.4
Prevalence of low income after tax in 2005 %	11.4	11.1	11	12.1	10.3	3.5
Total persons less than 6 years of age	1,972,050	797,595	90,810	47,830	38,610	4,365
Prevalence of low income before tax in 2005 %	19.3	19.3	19.8	21.6	19.3	4.1
Prevalence of low income after tax in 2005 %	14.5	14.8	14.6	16.5	13.6	2.7
Total persons 65 years of age and over	3,984,680	1,533,425	99,025	62,220	31,830	4,980
Prevalence of low income before tax in 2005 %	14.4	12	13.4	14.3	13.1	3.9
Prevalence of low income after tax in 2005 %	6.7	5.9	7.4	7.9	7.2	1.6

Source: Statistics Canada, Census of Canada, 2006.

Table 31. Rate of Growth in Average Family Income: Peel, 2000 & 2005

Region & Neighbourhoods	Average Family Income	Average Family Income	Rate of Change (Average Family Income)	
	2000	2005	2000-2005	
	\$	\$	\$	%
Canada	66,160	82,325	16,165	24.4
Ontario	73,849	90,526	16,677	22.6
Peel	79,324	94,302	14,978	18.9
City of Mississauga	80,381	94,302	13,921	17.3
Clarkson/Lorne Park	117,550	140,808	23,258	19.8
Cooksville/Dixie	69,267	76,575	7,308	10.6
Creditview	76,666	91,721	15,055	19.6
Erin Mills/Erindale	90,017	107,508	17,491	19.4
Hurontario	72,453	86,797	14,344	19.8
Malton	50,700	65,507	14,807	29.2
Meadowvale	88,842	99,846	11,004	12.4
Port Credit/ Lakeview	83,527	105,959	22,432	26.9
Streetsville	94,792	109,084	14,292	15.1
City of Brampton	74,263	87,992	13,729	18.5
Bramalea	74,511	88,169	13,658	18.3
Central Brampton	69,581	82,567	12,986	18.7
Gore	91,406	101,087	9,681	10.6
Heartlake	86,942	93,981	7,039	8.1
Town of Caledon	98,325	120,110	21,785	22.2
Bolton	93,415	117,211	23,796	25.5
Caledon (Urban)	97,871	122,709	24,838	25.4

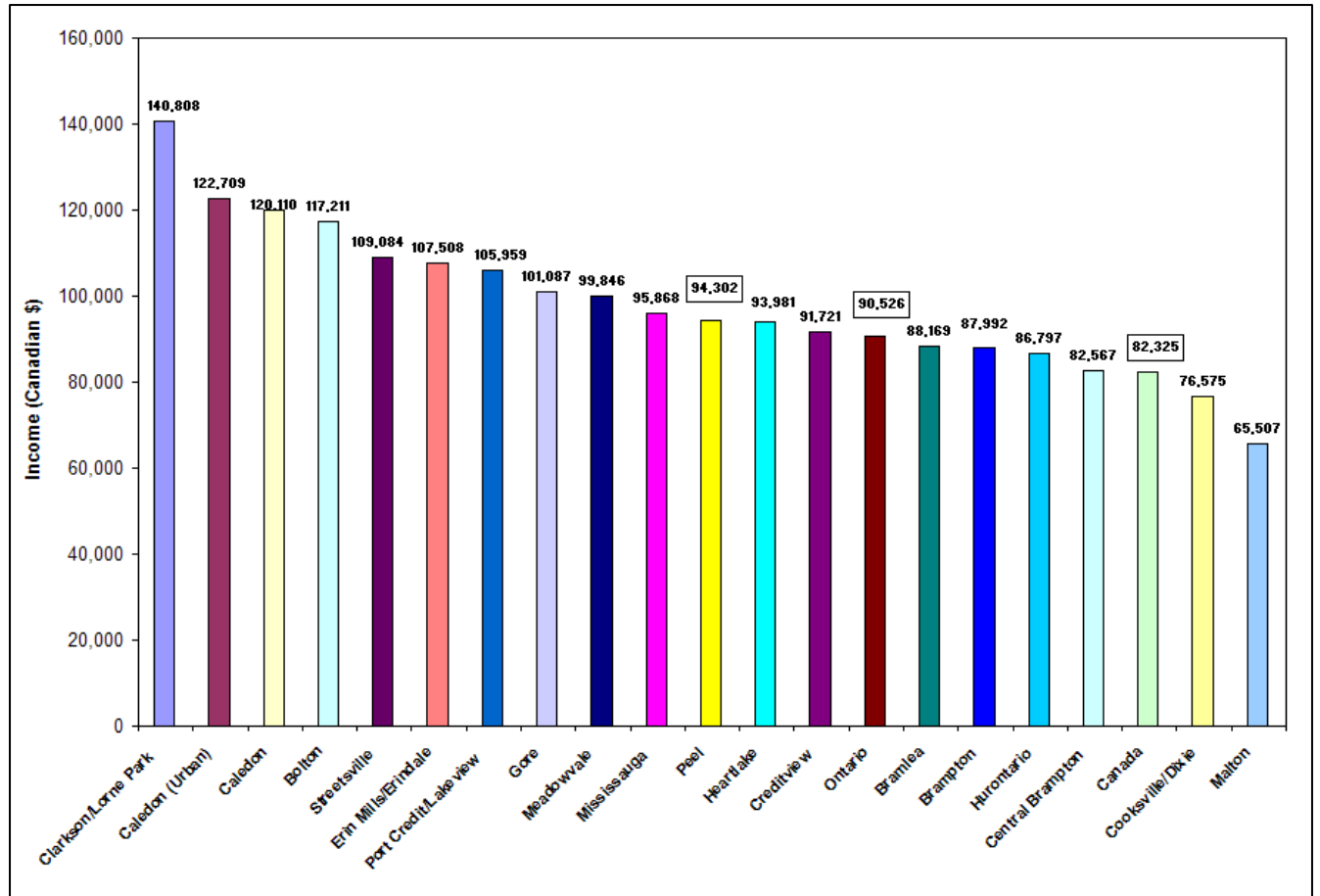
Source: Statistics Canada, Census of Canada, 2001; 2006.

Table 32. Rate of Growth in Low Income Families: Peel, 2000 & 2005

Region & Neighbourhoods	2000	2005	% Change
			2000-2005
	%	%	%
Canada	12.8	11.6	-1.2
Ontario	11.7	11.7	0.0
Peel	10.4	13.0	2.6
City of Mississauga	11.3	14.2	2.9
Clarkson/Lorne Park	6.9	9.4	2.5
Cooksville/Dixie	14.5	18.7	4.2
Creditview	11.8	13.5	1.7
Erin Mills/Erindale	10.1	14.0	3.9
Hurontario	11.6	15.0	3.4
Malton	20.1	21.0	0.9
Meadowvale	7.0	9.4	2.4
Port Credit/ Lakeview	10.4	11.0	0.6
Streetsville	8.5	11.8	3.3
City of Brampton	9.9	12.5	2.6
Bramalea	9.5	13.1	3.6
Central Brampton	11.4	14.2	2.8
Gore	4.5	11.2	6.7
Heartlake	5.8	8.8	3.0
Town of Caledon	3.8	3.6	-0.2
Bolton	4.2	4.2	0.0
Caledon (Urban)	5.9	2.7	-3.2

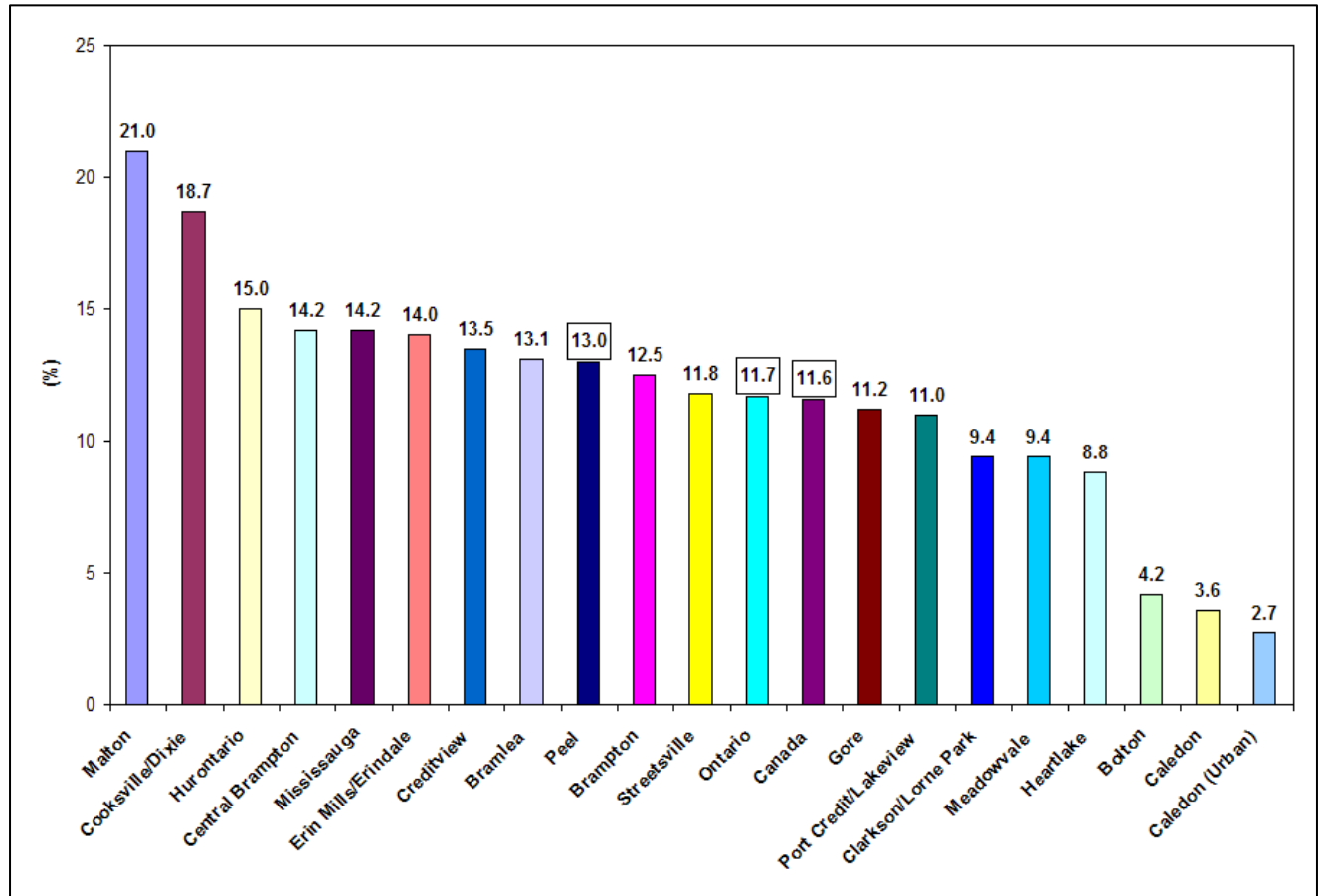
Source: Statistics Canada, Census of Canada, 2001; 2006.

Figure 20. Average Income (\$): Canada, Ontario, Peel, Peel's Municipalities and Selected Peel Neighbourhoods, 2005



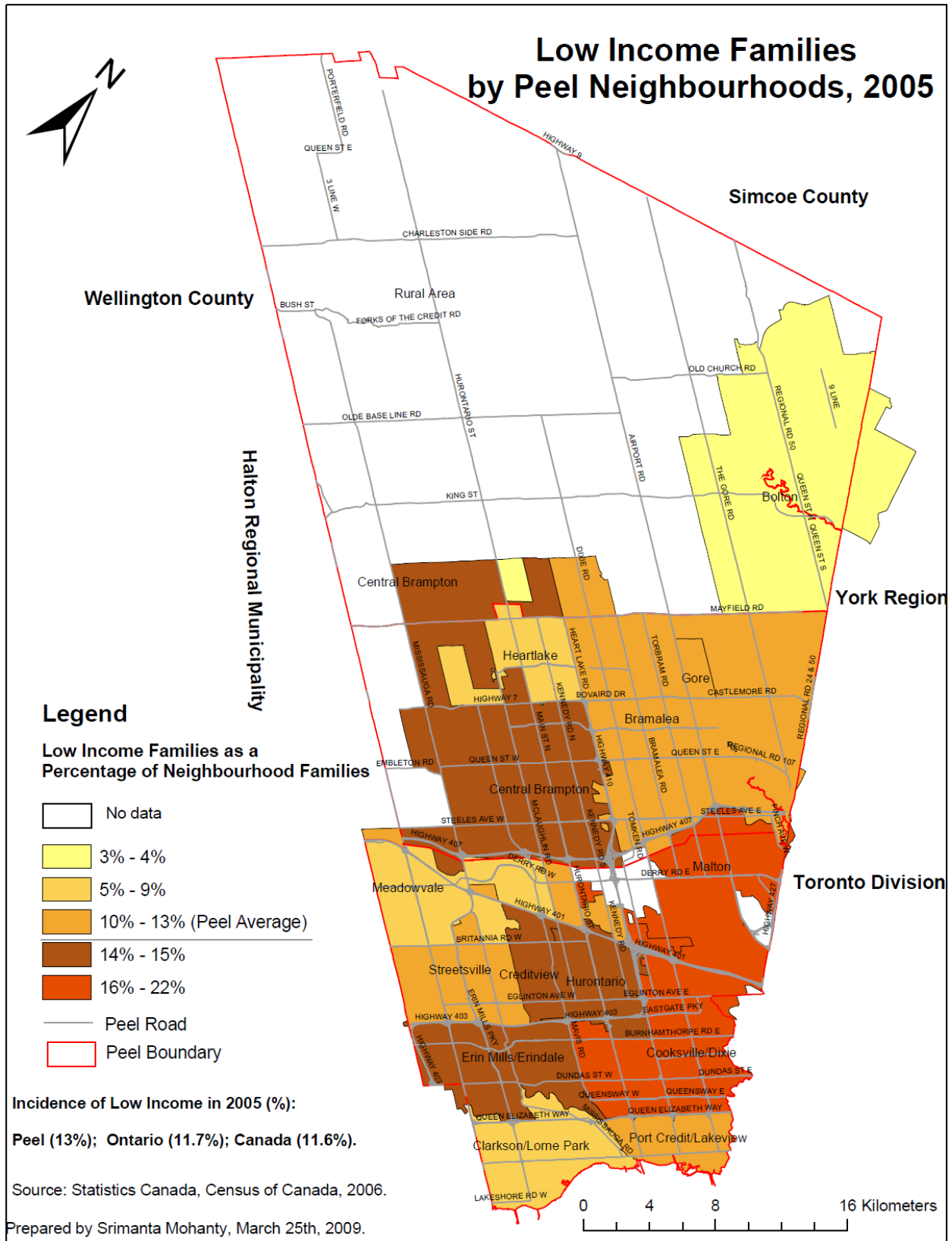
Source: Statistics Canada, Census of Canada, 2006.

Figure 21. Incidence of Low Income before Tax (%): Canada, Ontario, Peel, Peel's Municipalities and Selected Peel Neighbourhoods, 2005 (Economic Families)



Source: Statistics Canada, Census of Canada, 2006.

Figure 22



IV. Conclusion & Implications

IV. Conclusion & Implications

This report has shown where the socio-economic strengths and challenges are in the Region – at the neighbourhood level. There are several neighbourhoods within the Region of Peel with a high proportion of their population who are at risk of poverty, loneliness, social isolation, etc. Examples of such neighbourhoods include Malton, Port Credit/Lakeview, Cooksville/Dixie, Central Brampton and Creditview. The main value of the comparative analysis in this report is that it can be used to inform decision-making about priorities for social services, community development, and neighbourhoods in Peel Region.

The findings from the analysis of the data on the Peel Population have been organized into four (4) theme areas:

a. Growth:

- With a population of 1.2 million, Peel was one of the fastest growing regions in Canada, in 2006.
- Brampton was the fastest growing municipality in Peel between 2001 and 2006 (33.3%), followed by Caledon (12.7%) and Mississauga (9.1%).
- The three neighbourhoods with the highest growth rate between 2001 and 2006 were: Gore (1,396.2%), Caledon – Urban (454.9%) and Heartlake (115.9%).

Implications for Human Services Sector

- Increased demand for social services as well as for health, housing, employment, language training and other services for the population of Peel.
- Increased demand for public transportation services.

b. Diversity

- In 2006, 58.6% of Peel's population were immigrants.
- Peel's immigrant population grew by 32.1% between 2001 and 2006, compared to 13.6% for Canada and 12.25 for Ontario.
- In 2006, 50% of Peel's population identified themselves as a visible minority.

- The three largest groups of visible minorities in Peel in 2006 were: South Asians (272,765), Blacks (95,570), and Chinese (54,290).
- In 2006, 44.3% of Peel's population did not speak English or French as their first language.
- Excluding English, the top three languages spoken in Peel in 2006 were: Punjabi (8%), Urdu (3.7%) and Chinese (3.6%).

Implications for Human Services Sector

- Increased demand for culturally appropriate services for the Peel population.
- Increased demand for settlement services for Peel immigrants.
- Increased demand for diversity management training for health and social services organizations.
- Increased demand for social policies that address issues of diversity and social inclusion.

c. Vulnerability

- Peel has a large percentage of poor people (14.5%); isolated seniors (15.7%, 15,520); lone-parent families (15.3%, 49,600).
- The number of lone-parent families in Peel grew by 24.2% between 2001 and 2006.
- Between 2001 and 2006, lone-parent families grew the fastest in Brampton (39.6%).
- In 2006, Malton had the highest proportion of lone-parent families (19.8%).
- An increasing number of individuals and seniors are living alone in Peel, growing by 19.8% and 23.1% respectively, between 2001 and 2006.

Implications for Human Services Sector

- Increased demand for income support and employment training for the Peel population.
- Increased demand for family support services in Peel communities.
- Increased demand for affordable housing, affordable recreation services, dental services, etc. for the Peel population.

d. Resilience and Civic Capital.

- 23% of the population had a university degree compared to 21% in Ontario, and 18% in Canada as a whole.
- In 2006, 78.1% of Peel's population were home owners, compared to 71% in Ontario and 68.4% in Canada.
- The rate of growth in home ownership in Peel between 2001 and 2006 (22.1%) was significantly higher than the 13% and 11.8% growth rates for Ontario (13%) and Canada (11.8%).
- In 2005, the average family income in Peel of \$94,302 was higher than the \$90,526 in Ontario and \$82,325 for Canada as a whole.

Implications for Human Services Sector

- Increased demand (need) for participation in the Peel community at large, including opportunities for volunteerism and other forms of civic engagement and leadership.

Bibliography

- Altmayer, C. (2003). Population Growth and Demographic changes in Halton-Peel. Mississauga, ON: Halton-Peel District Health Council.
- Canada Post. (2004). Householder Counts and Maps. Consumer's Choice Provincial Index (Valid for mailings from April 16 to May 13, 2004) [On-line]. Available: <http://www.canadapost.ca/cpc2/addrm/hh/current/indexp/cpALL-e.asp>.
- Social Planning Council of Peel. (2004). Portraits of Peel: Neighbourhood Environmental Scan 1996 to 2001. Mississauga, Ontario: SPCP.
- Social Planning Council of Peel. (2005). A Comparative Perspective of Social Indicators in Peel Neighbourhoods, 2001. Mississauga, Ontario: SPCP.
- Social Planning Council of Peel. (2007). Statistical Profiles of the Visible Minority Groups in Peel, 2001. Mississauga, Ontario: SPCP.
- Social Planning Council of Peel. (September 2008). Portraits of Peel, 2001 & 2006 Mississauga, Ontario: SPCP.
- Statistics Canada. (1996). 1996 Community Profiles [On-line]. Available: <http://www12.statcan.ca/english/Profil/PlaceSearchForm1.cfm>
- Statistics Canada. (2001a). 2001 Community Profiles [On-line]. Available: <http://www12.statcan.ca/english/Profil01/CP01/Index.cfm?Lang=E>
- Statistics Canada. (2001b). Statistics Canada's 2001 Census Dictionary [On-line]. Available: <http://www12.statcan.ca/english/census01/Products/Reference/dict/atoz.htm>
- Statistics Canada. (2006a). Statistics Canada's 2006 Census Dictionary [On-line]. Available: <http://www12.statcan.gc.ca/census-recensement/2006/ref/dict/index-eng.cfm>
- Statistics Canada. (2006b). 2006 Community Profiles [On-line]. Available: <http://www12.statcan.ca/english/census06/data/profiles/community/Index.cfm?Lang=E>

APPENDICES

- A. Approach to Selection of Neighbourhoods & Geographic Areas Covered
- B. Selection of Social Indicators
- C. Glossary

A. APPROACH TO SELECTION OF NEIGHBOURHOODS & GEOGRAPHIC AREAS COVERED

Neighbourhood refers to geographic districts in the municipalities of Mississauga, Brampton, and Caledon. Fifteen neighbourhoods were identified based on postal code areas/forward sortation areas. These boundaries may not represent the "natural" boundaries identified by residents, community groups and service providers. They were chosen based on a combination of "natural" boundaries and practical limits on manipulating the available data.

Geographic Areas Covered

- Canada, Ontario
- Region of Peel
- City of Mississauga (selected neighbourhoods)
 1. Clarkson / Lorne Park (L5H, L5J)
 2. Cooksville / Dixie (L4W, L4X, L4Y, L5A, L5B)
 3. Creditview (L5V)
 4. Erin Mills / Erindale (L5C, L5K, L5L)
 5. Hurontario (L4Z, L5R)
 6. Malton (L4T, L5T*)
 6. Meadowvale (L5N, L5W)
 7. Port Credit / Lakeview (L5E, L5G)
 8. Streetsville (L5M)
- City of Brampton (selected neighbourhoods)
 1. Bramalea (L6R, L6S, L6T)
 2. Central Brampton (L6V, L6W, L6X, L6Y)
 3. Gore (L6P)
 4. Heartlake (L6Z, L7A)
- Town of Caledon (selected neighbourhoods)
 1. Bolton (L7E)
 2. Caledon [Urban] (L7C)

**No data available*

B. SELECTED SOCIAL INDICATORS

The social indicators selected for this report are based on availability of data, importance/priority and quality. The source of the data in Portraits of Peel is Statistics Canada: Census of Canada (2001 & 2006). Some of the indicators are based on the entire population including institutional residents (e.g. age, marital status, etc.). Information on the other indicators contained within the report is based on a 20% sample (extrapolated to the entire population), for example: language, income, schooling, etc.

Some of the data based on the 20% sample were collected only from non-institutionalized persons aged 15 and over (e.g. income, labour force activity, etc.). Please note that where necessary, definitions of indicators are taken from the 2006 Census Dictionary published by Statistics Canada at: <http://www12.statcan.ca/english/census06/reference/dictionary/index.cfm>.

Social Indicators Selected

(I). Demographic and Cultural Characteristics:

- Population: Size, Age and Growth
- Immigrants
- Visible Minority Population
- Language

(II). Household and Family Characteristics:

- Marital Status
- Families
- Population Living Alone
- Home Ownership

(III). Socio-economic Characteristics:

- Education
- Employment
- Income

C. GLOSSARY

Demographic & Cultural Characteristics

- **Growth of Population:** Population growth between 2001 and 2006 is calculated in the following way: $[(P2006 - P2001) \div (P2001)] \times 100$.
- **Immigrant Population:** People who are or who have ever been landed immigrants. Landed immigrants are people born outside of Canada who have been permitted by immigration authorities to live in Canada permanently; some will have lived in Canada for a number of years, while others have arrived recently.
- **Language (Mother Tongue):** Refers to the first language learned at home in childhood and still understood by the individual at the time of the Census.
- **Visible Minorities:** *Under the Employment Equity Act of Canada, members of visible minorities are persons, other than Aboriginal persons, who are not white in race or colour.*

Household & Family Characteristics

- **Marital Status:** A person's conjugal status under the law (e.g. single, married, divorced/separated, widowed).
- **Census Families:** Refers to a married couple (with or without children of either or both spouses), a couple living common-law (with or without children of either or both partners) or a lone parent of any marital status, with at least one child living in the same dwelling. A couple living common-law may be of opposite or same sex. "Children" in a census family include grandchildren living with their grandparent(s) but with no parents present.
- **Population Living Alone:** Population living alone is defined as the proportion of the population aged 15 years and over, living alone in a dwelling, in relation to the total number of persons aged 15 years and over in private households.
- **Seniors living alone** is defined as the proportion of the population aged 65 years and over living alone in a dwelling in relation to the total number of persons aged 65 years and over in private households.

- **Home Ownership / Occupied Private Dwelling:** Refers to a private dwelling in which a person or a group of persons is permanently residing and whether the dwelling is owned or rented by the person(s) living therein.

Socio-Economic Characteristics

Education

- **Highest level of schooling** refers to the highest grade or year of elementary or secondary (high) school attended, or to the highest year of college or university education completed. University education is considered to be a higher level of schooling than college education.

Employment

- **Labour force** refers to all persons, 15 years of age and over, excluding institutional residents, who were either employed or unemployed during the week (Sunday to Saturday) prior to Census day.
- **Participation rate** refers to the total labour force, expressed as a percentage of the population 15 years of age and over.
- **Employment rate** refers to the number of persons employed, expressed as a percentage of the total population 15 years of age and over.
- **Unemployment rate** refers to the unemployed labour force expressed as a percentage of the total labour force.

Income

- **Income** refers to money received from the following sources by persons 15 years of age and over: wages and salaries; net farm self-employment; net non-farm self-employment income from unincorporated business and/or professional practice; federal Child Tax benefits; Old Age Security pension and Guaranteed Income Supplement; benefits from Canada Pension Plan; benefits from Unemployment Insurance; other income from government sources; investment income; retirement pensions, and other money income.
- **Census family income** refers to the total income of all members of a census family 15 years of age and over.

- **Economic family** refers to a group of two or more persons who live in the same dwelling and are related to each other by blood, marriage, common-law or adoption.
- **Unattached individuals** refer to household members who are not members of an economic family. A person living alone is defined as an unattached individual.
- **Low Income before tax cut-offs (LICO-BT):** Income levels at which families or persons not in economic families spend 20% more than average of their before tax income on food, shelter and clothing.

Low income after-tax cut-offs (1992 base) for economic families and persons not in economic families, 2005

Size of Area of Residence					
Family size	Rural (farm and non-farm)	Small urban regions	30,000 to 99,999	100,000 to 499,999	500,000 or more
1	11,264	12,890	14,380	14,562	17,219
2	13,709	15,690	17,502	17,723	20,956
3	17,071	19,535	21,794	22,069	26,095
4	21,296	24,373	27,190	27,532	32,556
5	24,251	27,754	30,962	31,351	37,071
6	26,895	30,780	34,338	34,769	41,113
7+	29,539	33,806	37,713	38,187	45,155

Source: Statistics Canada. Income Research Paper Series, *Low Income Cut-offs for 2006 and Low Income Measures for 2005*. Statistics Canada Catalogue [no. 75F0002MIE](#), no. 004.

Low income before tax cut-offs (1992 base) for economic families and persons not in economic families, 2005

Size of Area of Residence					
Family size	Rural (farm and non-farm)	Small urban regions	30,000 to 99,999	100,000 to 499,999	500,000 or more
1	14,303	16,273	17,784	17,895	20,778
2	17,807	20,257	22,139	22,276	25,867
3	21,891	24,904	27,217	27,386	31,801
4	26,579	30,238	33,046	33,251	38,610
5	30,145	34,295	37,480	37,711	43,791
6	33,999	38,679	42,271	42,533	49,389
7+	37,853	43,063	47,063	47,354	54,987

Source: Statistics Canada. Income Research Paper Series, *Low Income Cut-offs for 2006 and Low Income Measures for 2005*. Statistics Canada Catalogue [no. 75F0002MIE](#), no. 004.

- *Incidence of low income* is the proportion or percentage of economic families or unattached individuals in a given classification below the low income cut-off.